

Product datasheet for **CS629140**

Frozen Tissue Sections, Neural tissue

Product data:

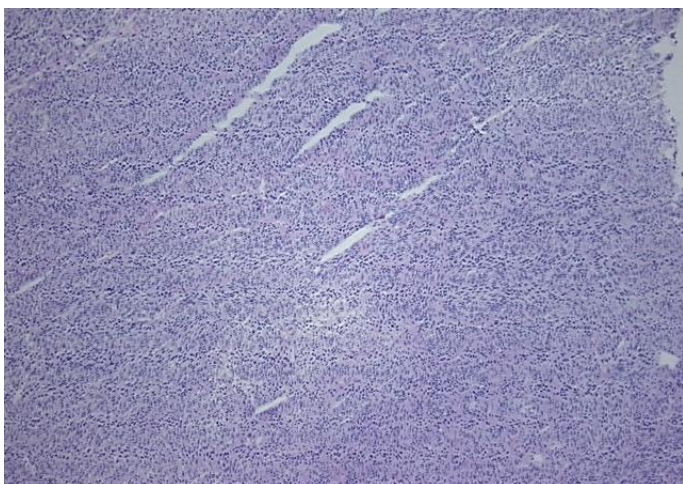
Product Type:	Frozen Sections
Disease State:	Cancer
Diagnosis Category:	Sarcoma
Tissue:	Nerve
Frozen Sample ID:	FR00024DFB
Case ID:	CU0000006487
Tissue of Origin:	Neural tissue
Site of Finding:	Foot
Appearance:	T
Sample Diagnosis (from Pathology Verification):	Malignant peripheral nerve sheath tumor
Normal:	0%
Lesional:	0%
Tumor:	95%
Tumor Hypo/Acellular Stroma:	0%
Tumor Hypercellular Stroma:	5%
Necrosis:	0%
CASE Diagnosis (from medical center path report):	Malignant peripheral nerve sheath tumor
Age:	57
Gender:	Female
Tumor Grade:	AJCC G3: Poorly differentiated
Minimum Stage Grouping:	II



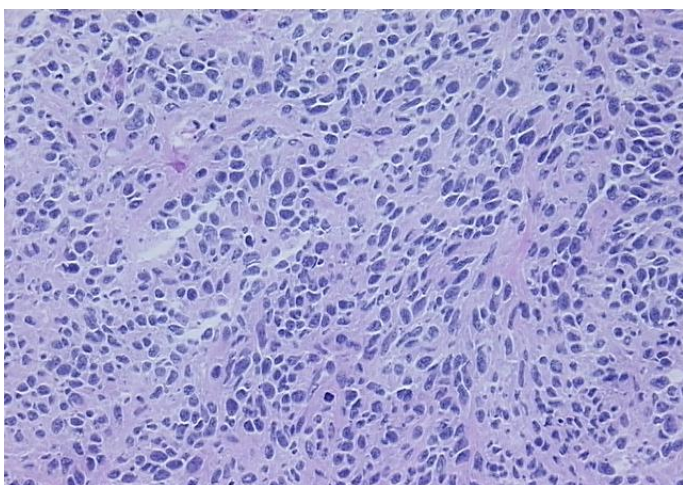
[View online »](#)

T (Extent of Primary Tumor):	T1b
N (Lymph node metastasis):	NX
M (Distant metastasis):	MX
Diagnostic Test Results:	MART-1 ~ Melanoma Marker ~ Melan-A,Negative; HMB45 melanoma antigen ~ GP100 ! by IHC,Negative; S100 protein,Negative; Cytokeratin CAM5.2 ~ CAM5.2 ! by IHC,Negative; Cytokeratin AE1/AE3 ~ AE1/AE3 ! by IHC,Negative
Storage:	Store frozen tissue sections at -80°C.
Stability:	All frozen tissue sections are stable for 1 year from date of purchase if stored at -80°C without repeated freeze/thaws.

Product images:



4x Image



20x Image