

Product datasheet for **CS629115**

Frozen Tissue Sections, Prostate

Product data:

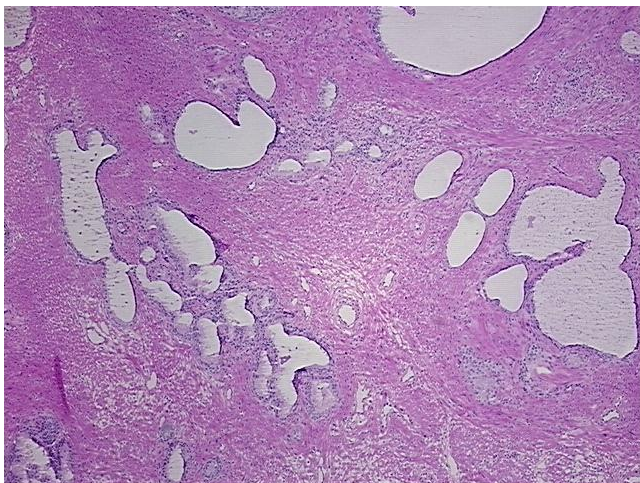
Product Type:	Frozen Sections
Disease State:	Other Disease
Diagnosis Category:	Benign Prostatic Hyperplasia (BPH)
Tissue:	Prostate
Frozen Sample ID:	FR00024DBC
Case ID:	CU0000006484
Tissue of Origin:	Prostate
Site of Finding:	Prostate
Appearance:	L
Sample Diagnosis (from Pathology Verification):	Hyperplasia of prostate
Normal:	0%
Lesional:	100%
Tumor:	0%
Tumor Hypo/Acellular Stroma:	0%
Tumor Hypercellular Stroma:	0%
Necrosis:	0%
Pathology Verification notes from H&E review:	40% glandular epithelium, 60% fibromuscular stroma; focal chronic inflammation
CASE Diagnosis (from medical center path report):	Hyperplasia of prostate
Age:	72
Gender:	Male
Storage:	Store frozen tissue sections at -80°C.



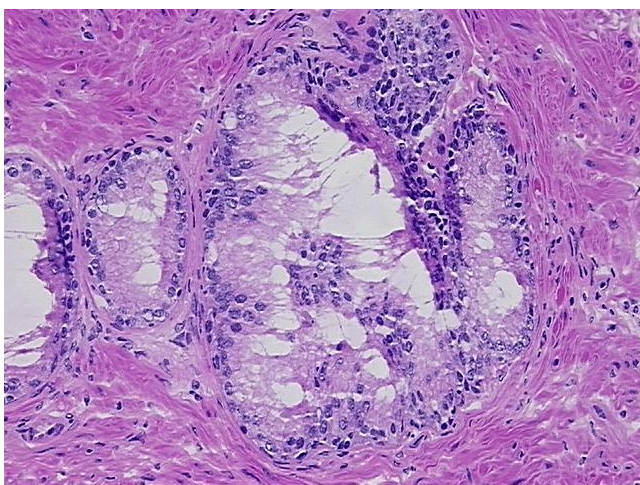
[View online »](#)

Stability: All frozen tissue sections are stable for 1 year from date of purchase if stored at -80°C without repeated freeze/thaws.

Product images:



4x Image



20x Image