

## Product datasheet for **CS629097**

### Frozen Tissue Sections, Small intestine

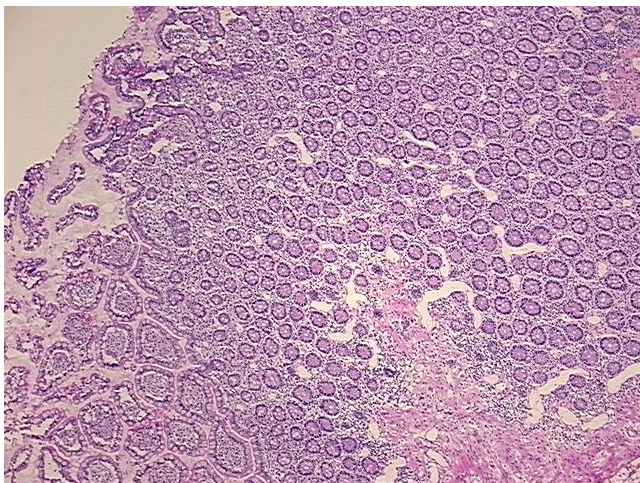
#### Product data:

Product Type:	Frozen Sections
Disease State:	Normal
Diagnosis Category:	Normal
Tissue:	Small intestine
Frozen Sample ID:	FR00024D5E
Case ID:	CU0000006479
Tissue of Origin:	Small intestine
Site of Finding:	Small intestine
Appearance:	R
Sample Diagnosis (from Pathology Verification):	Within normal limits
Normal:	100%
Lesional:	0%
Tumor:	0%
Tumor Hypo/Acellular Stroma:	0%
Tumor Hypercellular Stroma:	0%
Necrosis:	0%
Pathology Verification notes from H&E review:	55% mucosa, 10% submucosa and serosa, 35% muscle
CASE Diagnosis (from medical center path report):	Colitis, ulcerative, chronic active
Age:	45
Gender:	Male
Storage:	Store frozen tissue sections at -80°C.

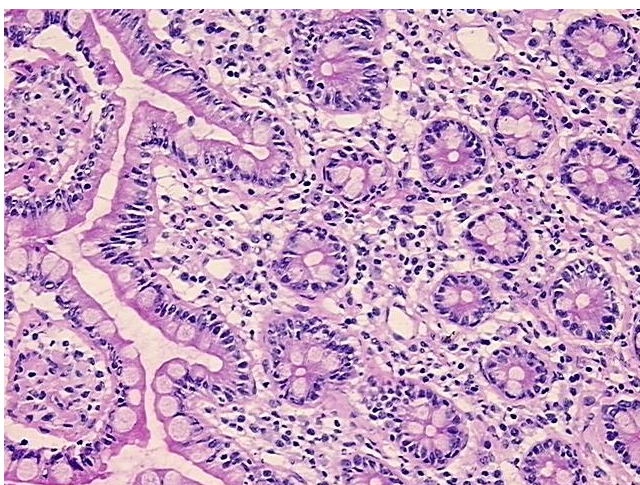

[View online »](#)

**Stability:** All frozen tissue sections are stable for 1 year from date of purchase if stored at -80°C without repeated freeze/thaws.

**Product images:**



4x Image



20x Image