

Product datasheet for **CS629054**

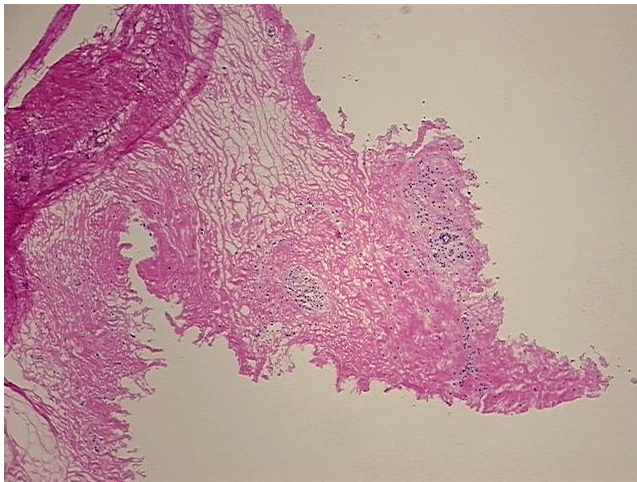
Frozen Tissue Sections, Breast

Product data:

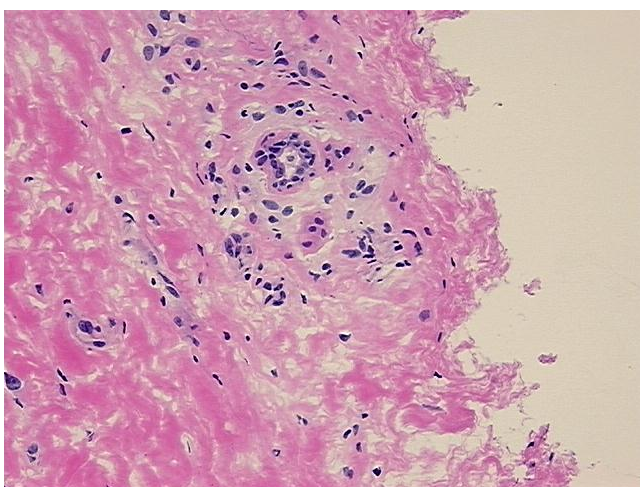
Product Type:	Frozen Sections
Disease State:	Normal
Diagnosis Category:	Normal
Tissue:	Breast
Frozen Sample ID:	FR00024CCE
Case ID:	CU00000006470
Tissue of Origin:	Breast
Site of Finding:	Breast
Appearance:	R
Sample Diagnosis (from Pathology Verification):	Within normal limits
Normal:	100%
Lesional:	0%
Tumor:	0%
Tumor Hypo/Acellular Stroma:	0%
Tumor Hypercellular Stroma:	0%
Necrosis:	0%
Pathology Verification notes from H&E review:	1% glandular epithelium, 25% stroma, 74% fat
CASE Diagnosis (from medical center path report):	Adenocarcinoma of breast, ductal
Age:	27
Gender:	Female
Tumor Grade:	Nottingham G3: 8-9 points High combined grade (unfavorable)


[View online »](#)

Minimum Stage Grouping:	IIIC
T (Extent of Primary Tumor):	T2
N (Lymph node metastasis):	N3
M (Distant metastasis):	MX
Diagnostic Test Results:	Progesterone receptor ~ PR ! by IHC,Positive; Estrogen receptor ~ ER ! by IHC,Positive; HER2 ~ ERBB2 ~ Neu ! by IHC,Positive, strong
Storage:	Store frozen tissue sections at -80°C.
Stability:	All frozen tissue sections are stable for 1 year from date of purchase if stored at -80°C without repeated freeze/thaws.

Product images:


4x Image



20x Image