

## Product datasheet for **CS628986**

### Frozen Tissue Sections, Colon

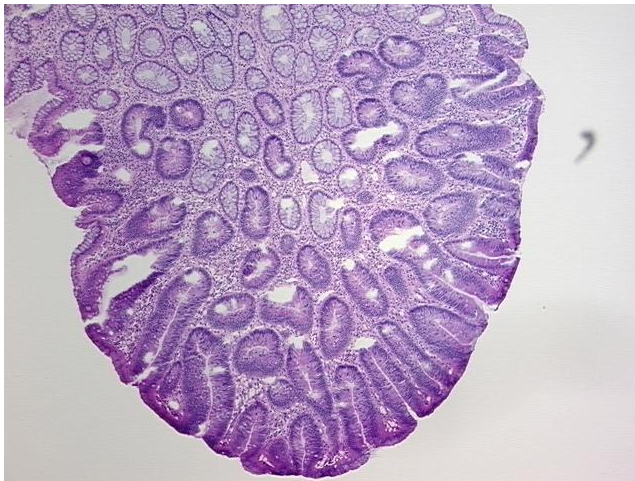
#### Product data:

Product Type:	Frozen Sections
Disease State:	Other Disease
Diagnosis Category:	Benign Tumors
Tissue:	Colon
Frozen Sample ID:	FR0001E07D
Case ID:	CU00000006465
Tissue of Origin:	Colon
Site of Finding:	Colon
Appearance:	T
Sample Diagnosis (from Pathology Verification):	Polyposis of colon, adenomatous
Normal:	80%
Lesional:	0%
Tumor:	15%
Tumor Hypo/Acellular Stroma:	0%
Tumor Hypercellular Stroma:	5%
Necrosis:	0%
Pathology Verification notes from H&E review:	Non Tumor Structures: 20% Mucosa, 20% Submucosa, 60% Muscle

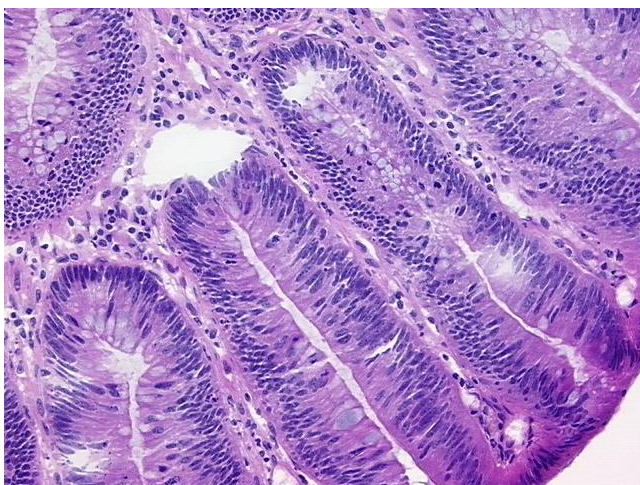


<b>CASE Diagnosis (from medical center path report):</b>	Familial Adenomatous Polyposis
<b>Age:</b>	43
<b>Gender:</b>	Female
<b>Tumor Grade:</b>	Not Reported
<b>Minimum Stage Grouping:</b>	Not Reported
<b>T (Extent of Primary Tumor):</b>	Not Reported
<b>N (Lymph node metastasis):</b>	Not Reported
<b>M (Distant metastasis):</b>	Not Reported
<b>Storage:</b>	Store frozen tissue sections at -80°C.
<b>Stability:</b>	All frozen tissue sections are stable for 1 year from date of purchase if stored at -80°C without repeated freeze/thaws.

**Product images:**



4x Image



20x Image