

## Product datasheet for CS628904

### Frozen Tissue Sections, Uterus

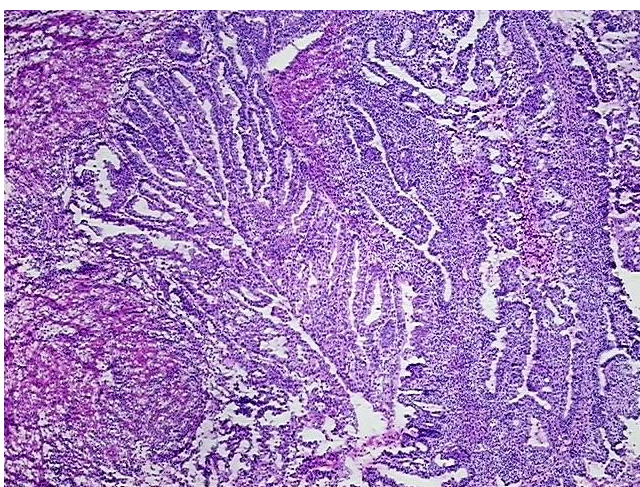
#### Product data:

Product Type:	Frozen Sections
Disease State:	Cancer
Diagnosis Category:	Endometrial Cancer
Tissue:	Uterus
Frozen Sample ID:	FR0001DE02
Case ID:	CU0000006448
Tissue of Origin:	Uterus
Site of Finding:	Uterus
Appearance:	Tumor
Sample Diagnosis (from Pathology Verification):	Adenocarcinoma of endometrium
Normal:	40%
Lesional:	0%
Tumor:	55%
Tumor Hypo/Acellular Stroma:	0%
Tumor Hypercellular Stroma:	5%
Necrosis:	0%
Pathology Verification notes from H&E review:	Normal: 40% myometrium
CASE Diagnosis (from medical center path report):	Adenocarcinoma of endometrium
Age:	77
Gender:	Female
Tumor Grade:	FIGO G3: Poorly differentiated

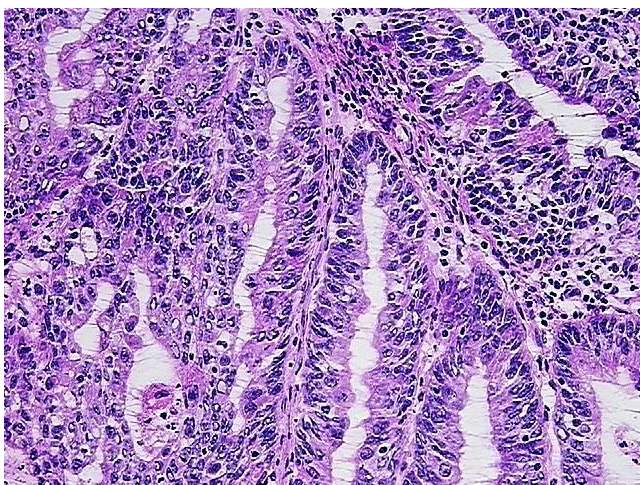


[View online »](#)

Minimum Stage Grouping:	IIB
T (Extent of Primary Tumor):	pT2b
N (Lymph node metastasis):	pNX
M (Distant metastasis):	pMX
Storage:	Store frozen tissue sections at -80°C.
Stability:	All frozen tissue sections are stable for 1 year from date of purchase if stored at -80°C without repeated freeze/thaws.

**Product images:**

4x Image



20x Image