

## Product datasheet for **CS628889**

### Frozen Tissue Sections, Breast

#### Product data:

Product Type:	Frozen Sections
Disease State:	Other Disease
Diagnosis Category:	Benign Tumors
Tissue:	Breast
Frozen Sample ID:	FR00028012
Case ID:	CU0000006439
Tissue of Origin:	Breast
Site of Finding:	Breast
Appearance:	T
Sample Diagnosis (from Pathology Verification):	Fibroadenoma of breast
Normal:	0%
Lesional:	0%
Tumor:	20%
Tumor Hypo/Acellular Stroma:	0%
Tumor Hypercellular Stroma:	80%
Necrosis:	0%
Pathology Verification notes from H&E review:	tumor stroma contains loose cellular connective tissue



[View online »](#)

**CASE Diagnosis (from medical center path report):** Fibroadenoma of breast

**Age:** 33

**Gender:** Female

**Tumor Grade:** Not Reported

**Minimum Stage Grouping:** Not Reported

**T (Extent of Primary Tumor):** Not Reported

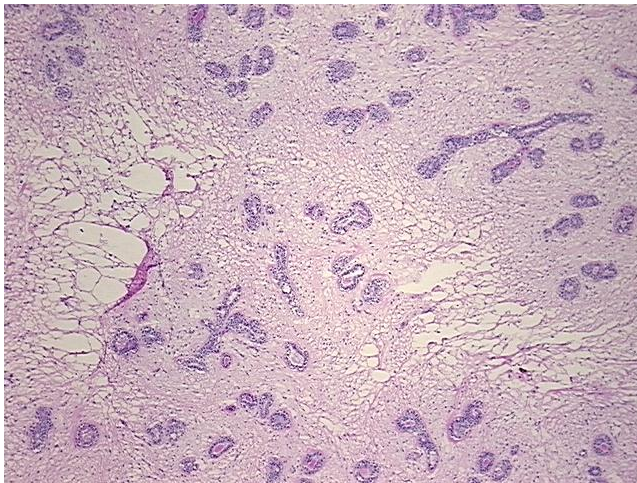
**N (Lymph node metastasis):** Not Reported

**M (Distant metastasis):** Not Reported

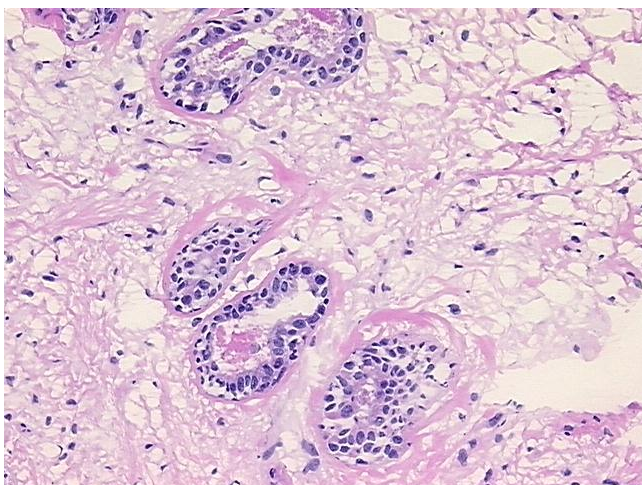
**Storage:** Store frozen tissue sections at  $-80^{\circ}\text{C}$ .

**Stability:** All frozen tissue sections are stable for 1 year from date of purchase if stored at  $-80^{\circ}\text{C}$  without repeated freeze/thaws.

**Product images:**



4x Image



20x Image