

Product datasheet for **CS628587**

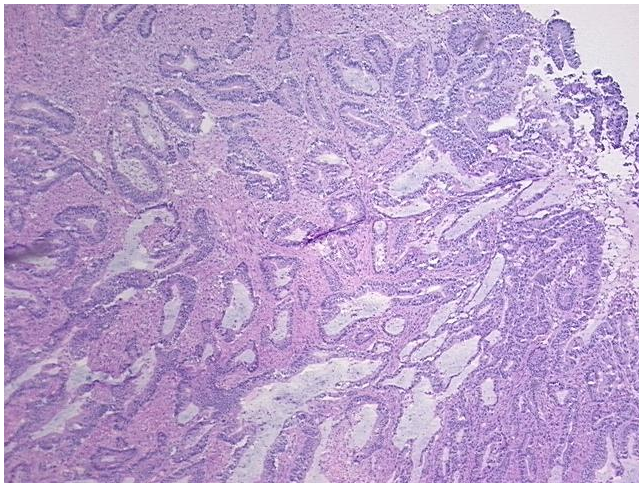
Frozen Tissue Sections, Colon: right

Product data:

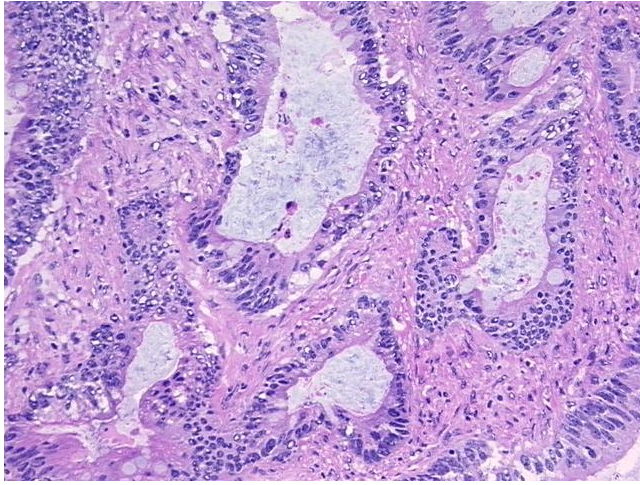
Product Type:	Frozen Sections
Disease State:	Cancer
Diagnosis Category:	Colorectal Cancer
Tissue:	Colon
Frozen Sample ID:	FR000281D7
Case ID:	CU0000006371
Tissue of Origin:	Colon: right
Site of Finding:	Colon: right
Appearance:	T
Sample Diagnosis (from Pathology Verification):	Adenocarcinoma of colon
Normal:	0%
Lesional:	0%
Tumor:	60%
Tumor Hypo/Acellular Stroma:	5%
Tumor Hypercellular Stroma:	35%
Necrosis:	0%
Pathology Verification notes from H&E review:	Tumor Stroma (Cellular): Desmoplastic reaction, Fibroblastic cells, Inflammatory cells; Tumor Stroma (Hypo/Acellular): Mucin



CASE Diagnosis (from medical center path report):	Adenocarcinoma of colon
Age:	42
Gender:	Female
Tumor Grade:	AJCC G2: Moderately differentiated
Minimum Stage Grouping:	I
T (Extent of Primary Tumor):	T2
N (Lymph node metastasis):	N0
M (Distant metastasis):	MX
Storage:	Store frozen tissue sections at -80°C .
Stability:	All frozen tissue sections are stable for 1 year from date of purchase if stored at -80°C without repeated freeze/thaws.

Product images:

4x Image



20x Image