

## Product datasheet for **CS628476**

### Frozen Tissue Sections, Intervertebral disc

#### Product data:

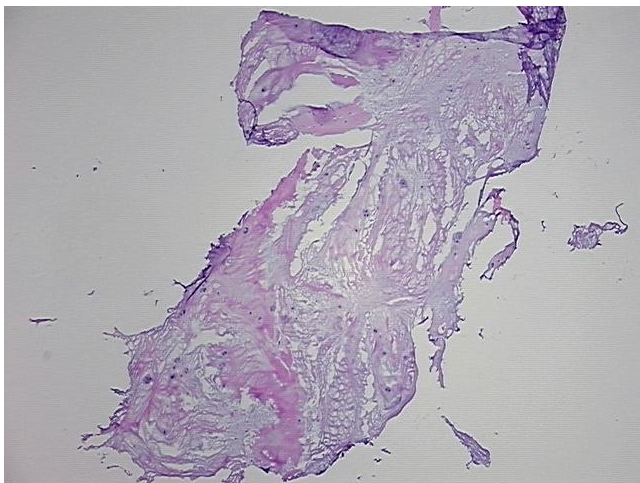
Product Type:	Frozen Sections
Disease State:	Other Disease
Diagnosis Category:	Intervertebral Disc Disorders
Tissue:	Intervertebral disc
Frozen Sample ID:	FR0001C61B
Case ID:	CU0000006348
Tissue of Origin:	Intervertebral disc
Site of Finding:	Intervertebral disc
Appearance:	L
Sample Diagnosis (from Pathology Verification):	Intervertebral disc disorders
Normal:	0%
Lesional:	100%
Tumor:	0%
Tumor Hypo/Acellular Stroma:	0%
Tumor Hypercellular Stroma:	0%
Necrosis:	0%
Pathology Verification notes from H&E review:	5% chondrocytes, 95% matrix; Degenerative intervertebral disc
CASE Diagnosis (from medical center path report):	Intervertebral disc disorders
Age:	49
Gender:	Female
Storage:	Store frozen tissue sections at -80°C.



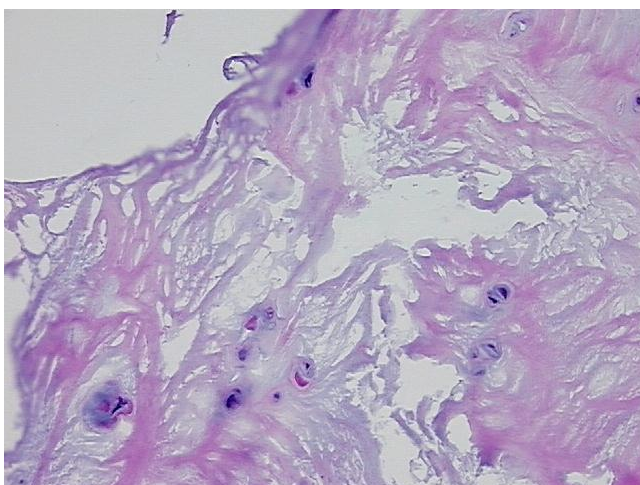
[View online »](#)

**Stability:** All frozen tissue sections are stable for 1 year from date of purchase if stored at -80°C without repeated freeze/thaws.

**Product images:**



4x Image



20x Image