

Product datasheet for **CS628463**

Frozen Tissue Sections, Pancreas

Product data:

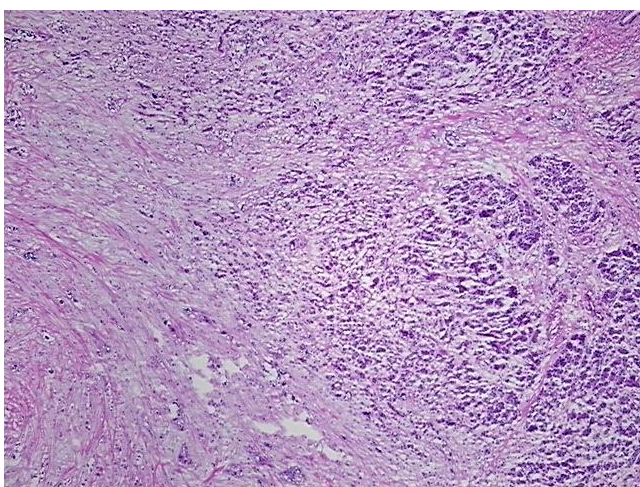
Product Type:	Frozen Sections
Disease State:	Cancer
Diagnosis Category:	Pancreatic Cancer
Tissue:	Pancreas
Frozen Sample ID:	FR0001C574
Case ID:	CU0000006344
Tissue of Origin:	Pancreas
Site of Finding:	Pancreas
Appearance:	T
Sample Diagnosis (from Pathology Verification):	Adenocarcinoma of pancreas, ductal
Normal:	80%
Lesional:	0%
Tumor:	5%
Tumor Hypo/Acellular Stroma:	15%
Tumor Hypercellular Stroma:	0%
Necrosis:	0%
Pathology Verification notes from H&E review:	normal component contains 60% exocrine epithelium, 5% endocrine epithelium, 15% stroma
CASE Diagnosis (from medical center path report):	Adenocarcinoma of pancreas, ductal
Age:	50
Gender:	Male
Tumor Grade:	AJCC G3: Poorly differentiated



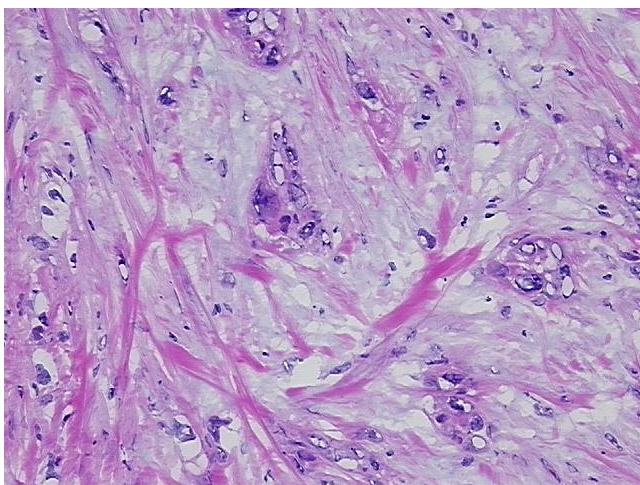
[View online »](#)

Minimum Stage Grouping:	IIA
T (Extent of Primary Tumor):	T3
N (Lymph node metastasis):	N0
M (Distant metastasis):	MX
Storage:	Store frozen tissue sections at -80°C.
Stability:	All frozen tissue sections are stable for 1 year from date of purchase if stored at -80°C without repeated freeze/thaws.

Product images:



4x Image



20x Image