

Product datasheet for **CS627980**

Frozen Tissue Sections, Kidney

Product data:

| | |
|---|---|
| Product Type: | Frozen Sections |
| Disease State: | Other Disease |
| Diagnosis Category: | Atrophy |
| Tissue: | Kidney |
| Frozen Sample ID: | FR65EE0901 |
| Case ID: | CU0000006277 |
| Tissue of Origin: | Kidney |
| Site of Finding: | Kidney |
| Appearance: | L |
| Sample Diagnosis (from Pathology Verification): | Atrophy of tissue |
| Normal: | 0% |
| Lesional: | 100% |
| Tumor: | 0% |
| Tumor Hypo/Acellular Stroma: | 0% |
| Tumor Hypercellular Stroma: | 0% |
| Necrosis: | 0% |
| Pathology Verification notes from H&E review: | Non Tumor Structures: 100% No normal architecture |
| CASE Diagnosis (from medical center path report): | Carcinoma of renal pelvis, transitional cell |
| Age: | 52 |
| Gender: | Male |
| Tumor Grade: | Fuhrman G2: Nuclei slightly irregular |



[View online »](#)

Minimum Stage Grouping: III

T (Extent of Primary Tumor): T3

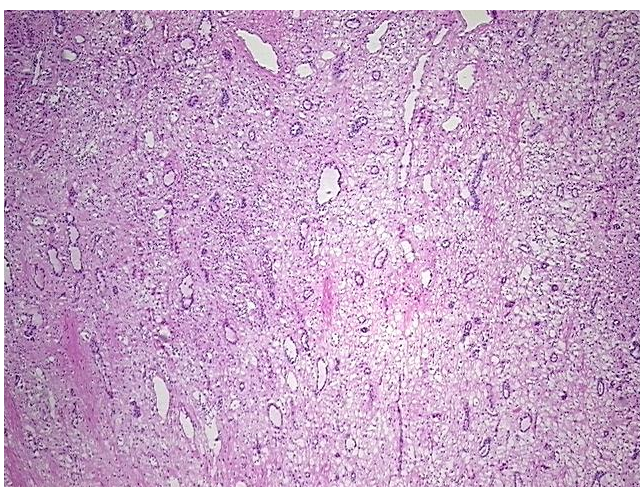
N (Lymph node metastasis): NX

M (Distant metastasis): MX

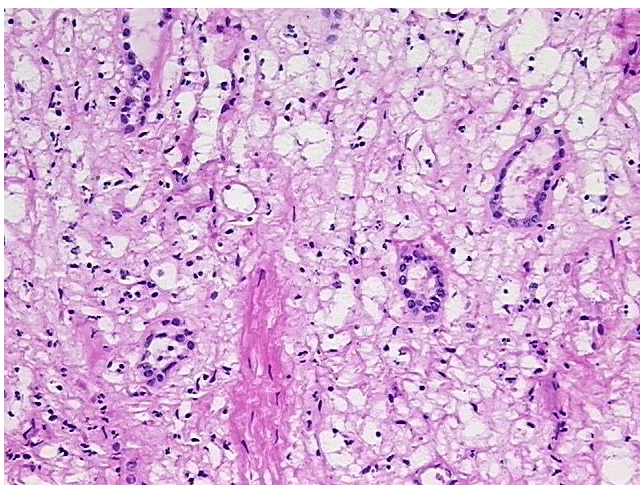
Storage: Store frozen tissue sections at -80°C.

Stability: All frozen tissue sections are stable for 1 year from date of purchase if stored at -80°C without repeated freeze/thaws.

Product images:



4x Image



20x Image