

Product datasheet for **CS627947**

Frozen Tissue Sections, Breast

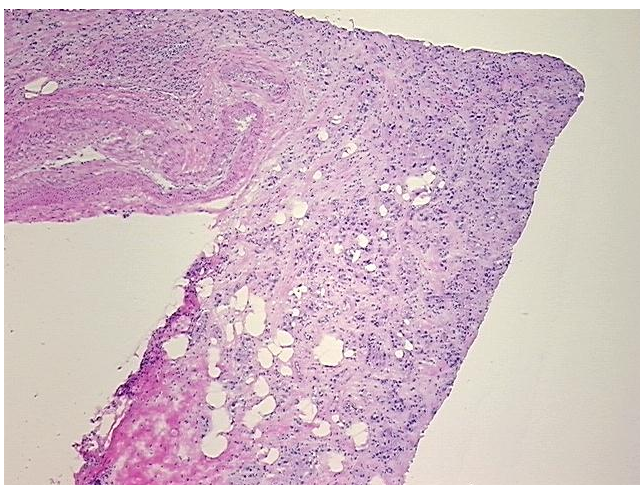
Product data:

| | |
|---|--|
| Product Type: | Frozen Sections |
| Disease State: | Cancer |
| Diagnosis Category: | Breast Cancer |
| Tissue: | Breast |
| Frozen Sample ID: | FR000230C2 |
| Case ID: | CU00000006276 |
| Tissue of Origin: | Breast |
| Site of Finding: | Breast |
| Appearance: | T |
| Sample Diagnosis (from Pathology Verification): | Adenocarcinoma of breast, ductal (triple negative) |
| Normal: | 60% |
| Lesional: | 0% |
| Tumor: | 25% |
| Tumor Hypo/Acellular Stroma: | 0% |
| Tumor Hypercellular Stroma: | 15% |
| Necrosis: | 0% |
| Pathology Verification notes from H&E review: | normal: 30% glandular epithelium, 30% stroma, 40% adipose tissue |
| CASE Diagnosis (from medical center path report): | Adenocarcinoma of breast, ductal |
| Age: | 62 |
| Gender: | Female |
| Tumor Grade: | Nottingham G2: 6-7 points Intermediate combined grade (moderately favorable) |

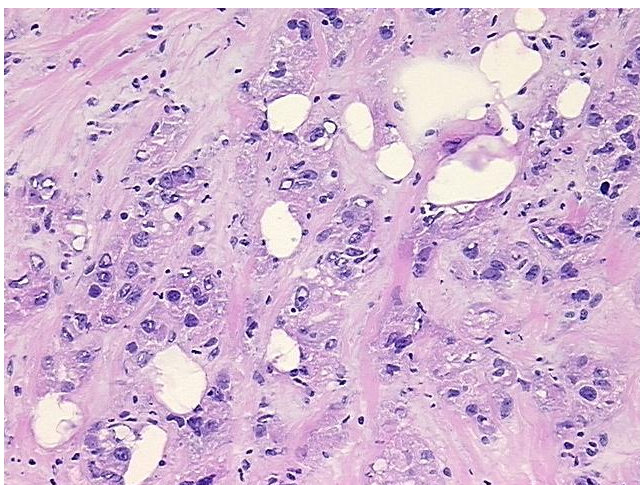

[View online »](#)

| | |
|------------------------------|--|
| Minimum Stage Grouping: | I |
| T (Extent of Primary Tumor): | T1c |
| N (Lymph node metastasis): | NX |
| M (Distant metastasis): | MX |
| Diagnostic Test Results: | Progesterone receptor ~ PR ! by IHC,Negative; Estrogen receptor ~ ER ! by IHC,Negative; ERBB2,Not amplified; HER2 ~ ERBB2 ~ Neu ! by IHC,Equivocal |
| Storage: | Store frozen tissue sections at -80°C. |
| Stability: | All frozen tissue sections are stable for 1 year from date of purchase if stored at -80°C without repeated freeze/thaws. |

Product images:



4x Image



20x Image