

## Product datasheet for **CS627749**

### Frozen Tissue Sections, Myeloid tissue

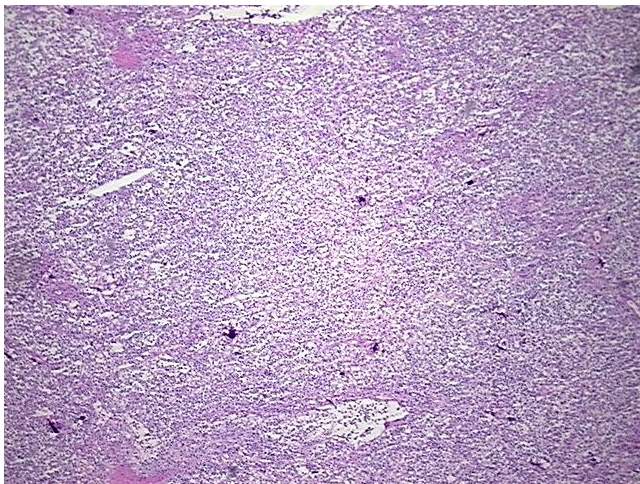
#### Product data:

Product Type:	Frozen Sections
Disease State:	Other Disease
Diagnosis Category:	Myeloproliferative/Myelodysplastic Disorder
Tissue:	Spleen
Frozen Sample ID:	FR65EE17F4
Case ID:	CU0000006257
Tissue of Origin:	Myeloid tissue
Site of Finding:	Spleen
Appearance:	L
Sample Diagnosis (from Pathology Verification):	Myeloproliferative syndrome
Normal:	0%
Lesional:	100%
Tumor:	0%
Tumor Hypo/Acellular Stroma:	0%
Tumor Hypercellular Stroma:	0%
Necrosis:	0%
CASE Diagnosis (from medical center path report):	Adenocarcinoma of colon
Age:	76
Gender:	Female
Tumor Grade:	AJCC G1: Well differentiated
Minimum Stage Grouping:	IIIA

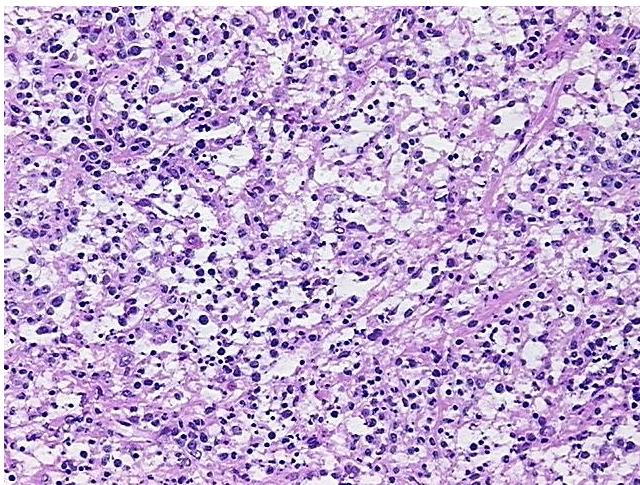


[View online »](#)

T (Extent of Primary Tumor):	T1
N (Lymph node metastasis):	N1
M (Distant metastasis):	MX
Storage:	Store frozen tissue sections at -80°C.
Stability:	All frozen tissue sections are stable for 1 year from date of purchase if stored at -80°C without repeated freeze/thaws.

**Product images:**

4x Image



20x Image