

Product datasheet for CS627698

Frozen Tissue Sections, Spleen

Product data:

Product Type:	Frozen Sections
Disease State:	Other Disease
Diagnosis Category:	Splenomegaly
Tissue:	Spleen
Frozen Sample ID:	FR00024A0F
Case ID:	CU0000006255
Tissue of Origin:	Spleen
Site of Finding:	Spleen
Appearance:	L
Sample Diagnosis (from Pathology Verification):	Splenomegaly
Normal:	0%
Lesional:	100%
Tumor:	0%
Tumor Hypo/Acellular Stroma:	0%
Tumor Hypercellular Stroma:	0%
Necrosis:	0%
Pathology Verification notes from H&E review:	Non Tumor Structures: 95% Red pulp, 5% White pulp
CASE Diagnosis (from medical center path report):	Splenomegaly
Age:	56
Gender:	Male



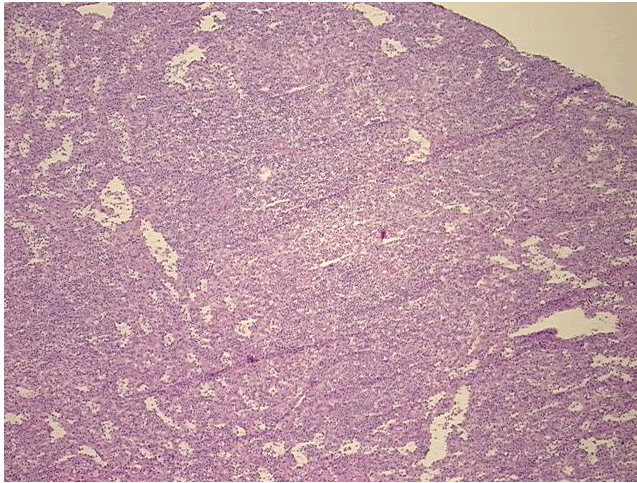
[View online »](#)

Diagnostic Test Results: CD3 ~ Leu4 ~ UCHT1 ! by IHC,Reported as Performed or Reviewed; Kappa light chain ! by FC,Positive, polyclonal; Lambda light chain ! by FC,Positive, polyclonal; CD45RO ~ A6 ~ UCHL1 ! by IHC,Reported as Performed or Reviewed; CD20 ~ B1 ~ Leu16 !

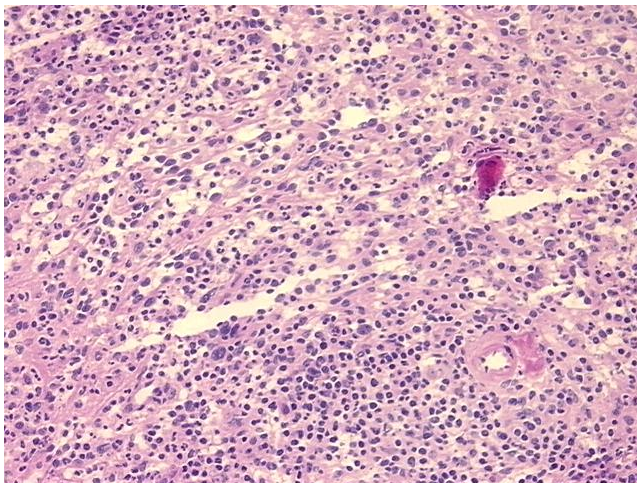
Storage: Store frozen tissue sections at -80°C.

Stability: All frozen tissue sections are stable for 1 year from date of purchase if stored at -80°C without repeated freeze/thaws.

Product images:



4x Image



20x Image