

Product datasheet for **CS627490**

Frozen Tissue Sections, Breast

Product data:

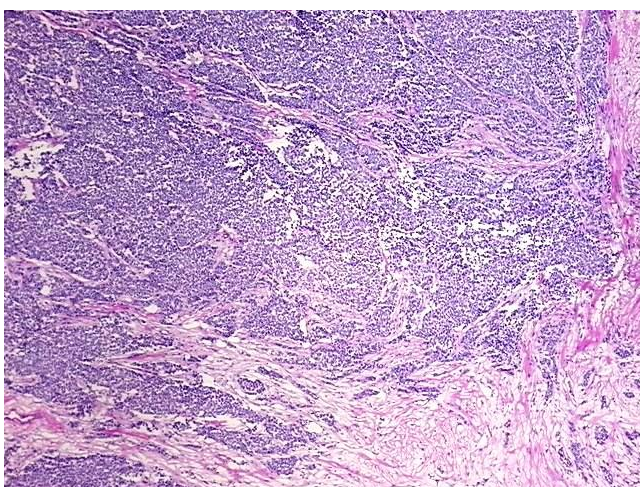
Product Type:	Frozen Sections
Disease State:	Cancer
Diagnosis Category:	Breast Cancer
Tissue:	Breast
Frozen Sample ID:	FR0002C717
Case ID:	CU0000006236
Tissue of Origin:	Breast
Site of Finding:	Lymph node
Appearance:	Tumor
Sample Diagnosis (from Pathology Verification):	Adenocarcinoma of breast, lobular, metastatic
Normal:	0%
Lesional:	0%
Tumor:	60%
Tumor Hypo/Acellular Stroma:	40%
Tumor Hypercellular Stroma:	0%
Necrosis:	0%
Pathology Verification notes from H&E review:	Tumor: extension into perinodal soft tissue; Tumor Stroma (Hypo/Acellular): Fibrosis
CASE Diagnosis (from medical center path report):	Adenocarcinoma of breast, lobular
Age:	57
Gender:	Female
Tumor Grade:	Nottingham G3: 8-9 points High combined grade (unfavorable)



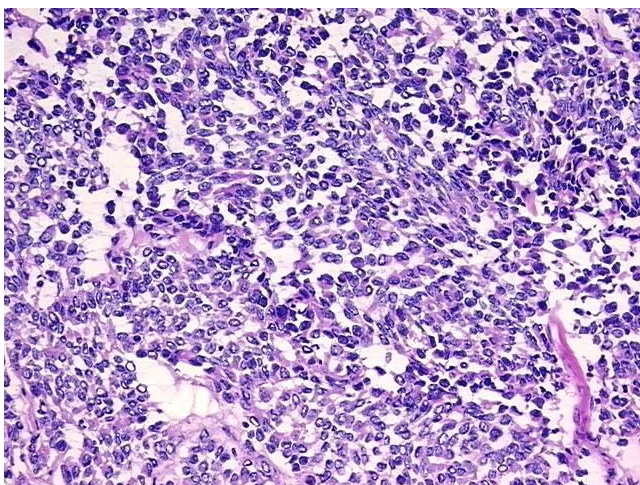
[View online »](#)

Minimum Stage Grouping:	IIIC
T (Extent of Primary Tumor):	pT2
N (Lymph node metastasis):	pN3a
M (Distant metastasis):	pMX
Storage:	Store frozen tissue sections at -80°C.
Stability:	All frozen tissue sections are stable for 1 year from date of purchase if stored at -80°C without repeated freeze/thaws.

Product images:



4x Image



20x Image