

## Product datasheet for **CS627018**

### Frozen Tissue Sections, Colon

#### Product data:

Product Type:	Frozen Sections
Disease State:	Cancer
Diagnosis Category:	Colorectal Cancer
Tissue:	Colon
Frozen Sample ID:	FR00023E03
Case ID:	CU00000006195
Tissue of Origin:	Colon
Site of Finding:	Colon
Appearance:	T
Sample Diagnosis (from Pathology Verification):	Adenocarcinoma of colon
Normal:	95%
Lesional:	0%
Tumor:	5%
Tumor Hypo/Acellular Stroma:	0%
Tumor Hypercellular Stroma:	0%
Necrosis:	0%
Pathology Verification notes from H&E review:	normal: 35% mucosa, 55% submucosa and serosa, 10% muscle



[View online »](#)

**CASE Diagnosis (from medical center path report):** Adenocarcinoma of colon

**Age:** 65

**Gender:** Male

**Tumor Grade:** AJCC G1: Well differentiated

**Minimum Stage Grouping:** II

**T (Extent of Primary Tumor):** T3

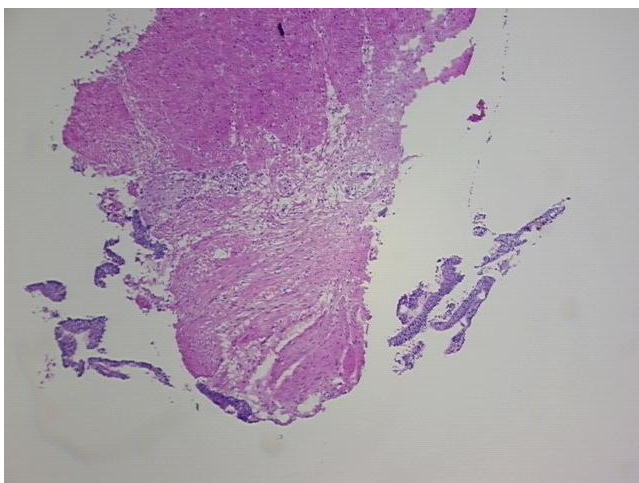
**N (Lymph node metastasis):** N0

**M (Distant metastasis):** MX

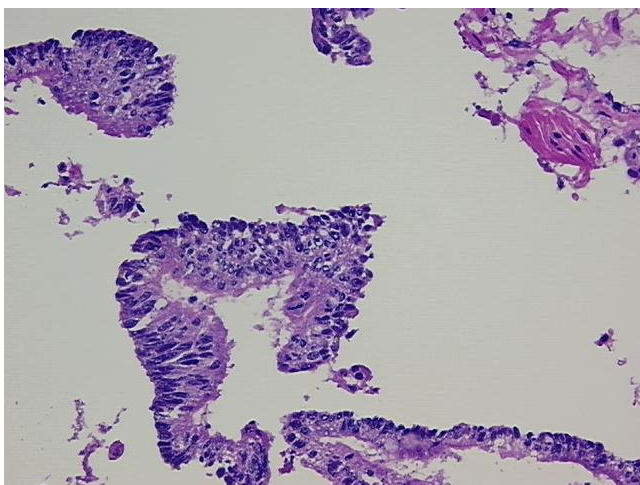
**Storage:** Store frozen tissue sections at -80°C.

**Stability:** All frozen tissue sections are stable for 1 year from date of purchase if stored at -80°C without repeated freeze/thaws.

### Product images:



4x Image



20x Image