

Product datasheet for **CS626971**

Frozen Tissue Sections, Colon

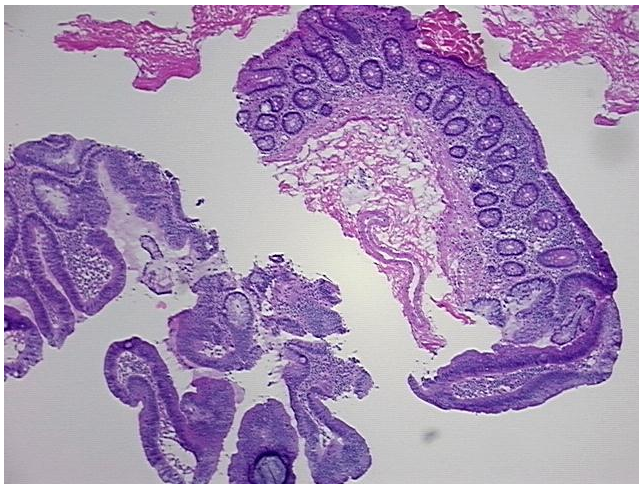
Product data:

Product Type:	Frozen Sections
Disease State:	Other Disease
Diagnosis Category:	Benign Tumors
Tissue:	Colon
Frozen Sample ID:	FR0001EA99
Case ID:	CU0000006189
Tissue of Origin:	Colon
Site of Finding:	Colon
Appearance:	T
Sample Diagnosis (from Pathology Verification):	Adenoma of colon
Normal:	85%
Lesional:	5%
Tumor:	10%
Tumor Hypo/Acellular Stroma:	0%
Tumor Hypercellular Stroma:	0%
Necrosis:	0%
Pathology Verification notes from H&E review:	Normal: 35% mucosa, 45% submucosa, 5% muscle
CASE Diagnosis (from medical center path report):	Adenoma of colon
Age:	68
Gender:	Female
Tumor Grade:	Not Reported

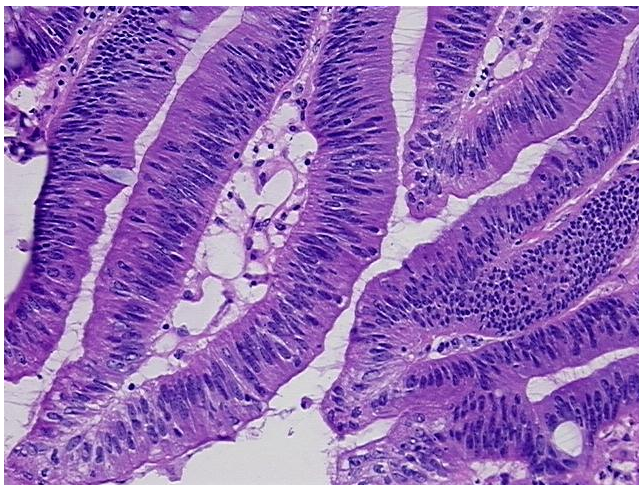


[View online »](#)

Minimum Stage Grouping:	Not Reported
T (Extent of Primary Tumor):	Not Reported
N (Lymph node metastasis):	Not Reported
M (Distant metastasis):	Not Reported
Storage:	Store frozen tissue sections at -80°C.
Stability:	All frozen tissue sections are stable for 1 year from date of purchase if stored at -80°C without repeated freeze/thaws.

Product images:

4x Image



20x Image