

Product datasheet for **CS626838**

Frozen Tissue Sections, Joint

Product data:

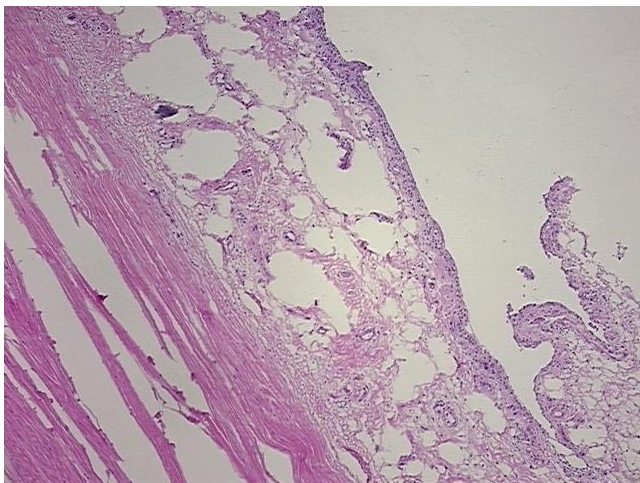
Product Type:	Frozen Sections
Disease State:	Normal
Diagnosis Category:	Normal
Tissue:	Joint
Frozen Sample ID:	FR6A38B37D
Case ID:	CU0000006174
Tissue of Origin:	Joint
Site of Finding:	Joint
Appearance:	R
Sample Diagnosis (from Pathology Verification):	Within normal limits
Normal:	100%
Lesional:	0%
Tumor:	0%
Tumor Hypo/Acellular Stroma:	0%
Tumor Hypercellular Stroma:	0%
Necrosis:	0%
Pathology Verification notes from H&E review:	5% synovial lining, 25% fibrofatty stroma, 70% dense connective tissue of bursa
CASE Diagnosis (from medical center path report):	Atherosclerosis
Age:	57
Gender:	Female
Storage:	Store frozen tissue sections at -80°C.



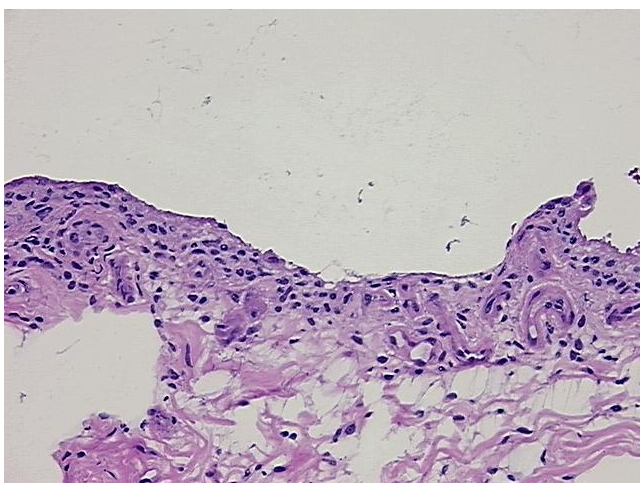
[View online »](#)

Stability: All frozen tissue sections are stable for 1 year from date of purchase if stored at -80°C without repeated freeze/thaws.

Product images:



4x Image



20x Image