

Product datasheet for **CS626835**

Frozen Tissue Sections, Joint

Product data:

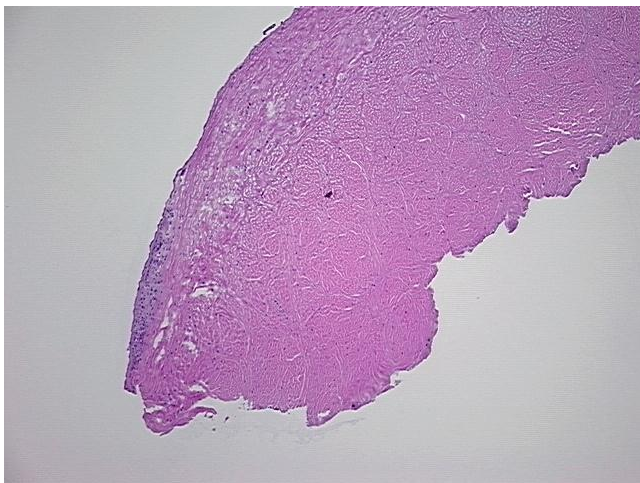
Product Type:	Frozen Sections
Disease State:	Normal
Diagnosis Category:	Normal
Tissue:	Joint
Frozen Sample ID:	FR65EE17CA
Case ID:	CU0000006174
Tissue of Origin:	Joint
Site of Finding:	Joint
Appearance:	R
Sample Diagnosis (from Pathology Verification):	Within normal limits
Normal:	100%
Lesional:	0%
Tumor:	0%
Tumor Hypo/Acellular Stroma:	0%
Tumor Hypercellular Stroma:	0%
Necrosis:	0%
Pathology Verification notes from H&E review:	1% synovium, 0% fat, 99% fibrous/tendinous tissue
CASE Diagnosis (from medical center path report):	Atherosclerosis
Age:	57
Gender:	Female
Storage:	Store frozen tissue sections at -80°C.



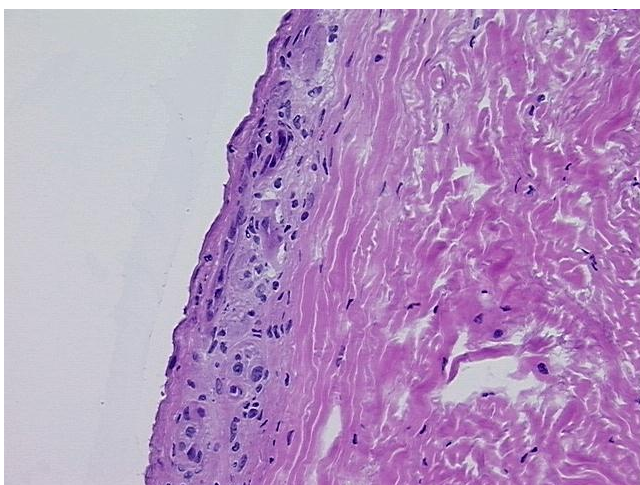
[View online »](#)

Stability: All frozen tissue sections are stable for 1 year from date of purchase if stored at -80°C without repeated freeze/thaws.

Product images:



4x Image



20x Image