

Product datasheet for **CS626735**

Frozen Tissue Sections, Breast

Product data:

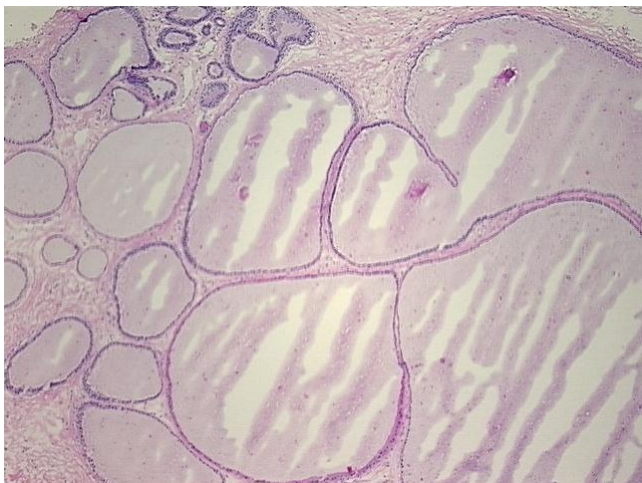
Product Type:	Frozen Sections
Disease State:	Other Disease
Diagnosis Category:	Ectasia
Tissue:	Breast
Frozen Sample ID:	FR0001E76D
Case ID:	CU0000006165
Tissue of Origin:	Breast
Site of Finding:	Breast
Appearance:	L
Sample Diagnosis (from Pathology Verification):	Ductal ectasia of breast
Normal:	65%
Lesional:	35%
Tumor:	0%
Tumor Hypo/Acellular Stroma:	0%
Tumor Hypercellular Stroma:	0%
Necrosis:	0%
Pathology Verification notes from H&E review:	normal: 20% epithelium, 70% fibrovacular stroma, 10% mature adipose tissue
CASE Diagnosis (from medical center path report):	Ductal hyperplasia of breast
Age:	50
Gender:	Female
Storage:	Store frozen tissue sections at -80°C.



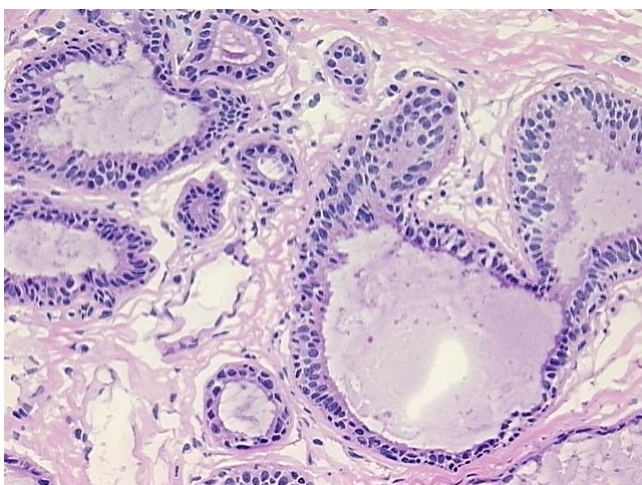
[View online »](#)

Stability: All frozen tissue sections are stable for 1 year from date of purchase if stored at -80°C without repeated freeze/thaws.

Product images:



4x Image



20x Image