

## Product datasheet for **CS626422**

### Frozen Tissue Sections, Small intestine

#### Product data:

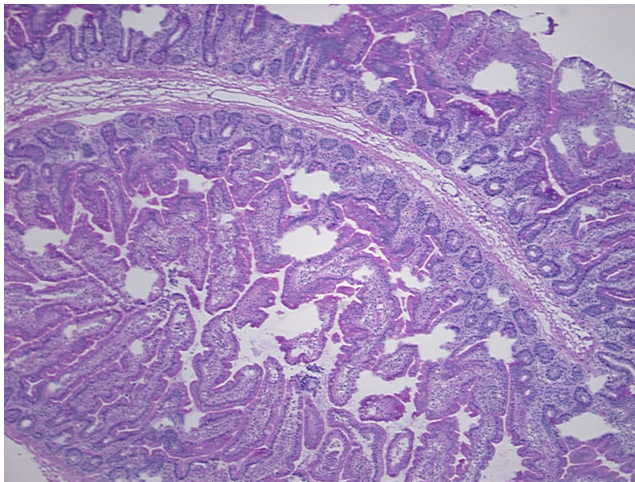
Product Type:	Frozen Sections
Disease State:	Normal
Diagnosis Category:	Normal
Tissue:	Small intestine
Frozen Sample ID:	FR6A3896C9
Case ID:	CU0000006141
Tissue of Origin:	Small intestine
Site of Finding:	Small intestine
Appearance:	R
Sample Diagnosis (from Pathology Verification):	Within normal limits
Normal:	100%
Lesional:	0%
Tumor:	0%
Tumor Hypo/Acellular Stroma:	0%
Tumor Hypercellular Stroma:	0%
Necrosis:	0%
Pathology Verification notes from H&E review:	45% mucosa, 10% submucosa, 45% muscle
CASE Diagnosis (from medical center path report):	Gastrointestinal stromal tumor of small intestine
Age:	78
Gender:	Male
Tumor Grade:	Not Reported



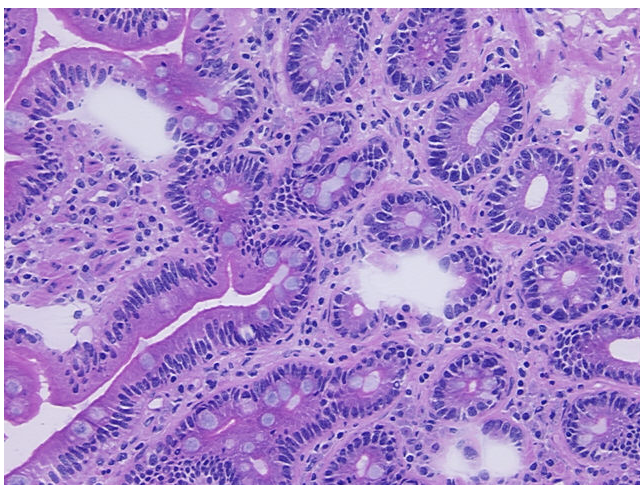
[View online »](#)

<b>Minimum Stage Grouping:</b>	Not Reported
<b>T (Extent of Primary Tumor):</b>	Not Reported
<b>N (Lymph node metastasis):</b>	Not Reported
<b>M (Distant metastasis):</b>	Not Reported
<b>Diagnostic Test Results:</b>	S100 protein,Negative; Desmin ! by IHC,Negative; CD34 ~ HPCA ! by IHC,Negative; MSA ~ Muscle Specific Actin,Positive, weak; CD117 ~ C-kit ~ SCFR ! by IHC,Positive
<b>Storage:</b>	Store frozen tissue sections at -80°C.
<b>Stability:</b>	All frozen tissue sections are stable for 1 year from date of purchase if stored at -80°C without repeated freeze/thaws.

### Product images:



4x Image



20x Image