

## Product datasheet for **CS626420**

### Frozen Tissue Sections, Small intestine

#### Product data:

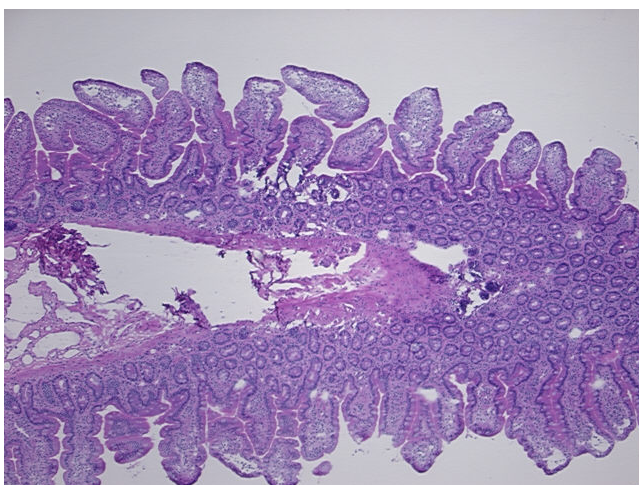
Product Type:	Frozen Sections
Disease State:	Normal
Diagnosis Category:	Normal
Tissue:	Small intestine
Frozen Sample ID:	FR6A3896C7
Case ID:	CU0000006141
Tissue of Origin:	Small intestine
Site of Finding:	Small intestine
Appearance:	R
Sample Diagnosis (from Pathology Verification):	Within normal limits
Normal:	100%
Lesional:	0%
Tumor:	0%
Tumor Hypo/Acellular Stroma:	0%
Tumor Hypercellular Stroma:	0%
Necrosis:	0%
Pathology Verification notes from H&E review:	55% mucosa, 5% submucosa, 40% muscle
CASE Diagnosis (from medical center path report):	Gastrointestinal stromal tumor of small intestine
Age:	78
Gender:	Male
Tumor Grade:	Not Reported



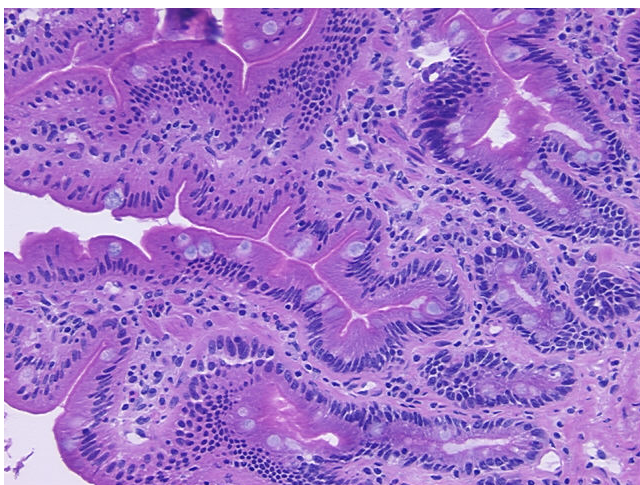
[View online »](#)

Minimum Stage Grouping:	Not Reported
T (Extent of Primary Tumor):	Not Reported
N (Lymph node metastasis):	Not Reported
M (Distant metastasis):	Not Reported
Diagnostic Test Results:	S100 protein,Negative; Desmin ! by IHC,Negative; CD34 ~ HPCA ! by IHC,Negative; MSA ~ Muscle Specific Actin,Positive, weak; CD117 ~ C-kit ~ SCFR ! by IHC,Positive
Storage:	Store frozen tissue sections at -80°C.
Stability:	All frozen tissue sections are stable for 1 year from date of purchase if stored at -80°C without repeated freeze/thaws.

### Product images:



4x Image



20x Image