

Product datasheet for CS626371

Frozen Tissue Sections, Small intestine

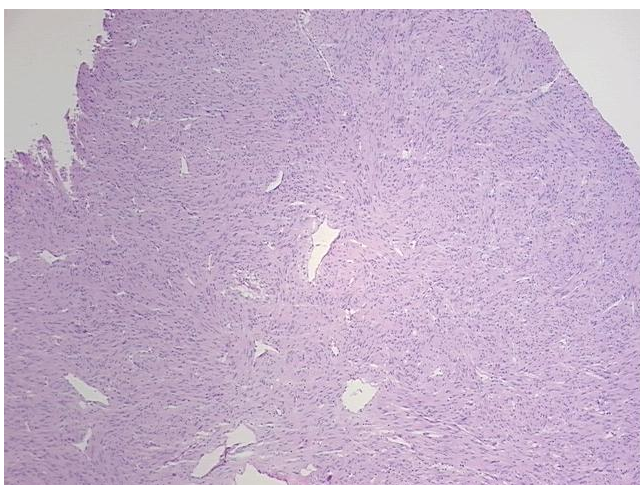
Product data:

Product Type:	Frozen Sections
Disease State:	Other Disease
Diagnosis Category:	Gastrointestinal Stromal Tumor (GIST)
Tissue:	Small intestine
Frozen Sample ID:	FR0001E1F2
Case ID:	CU0000006141
Tissue of Origin:	Small intestine
Site of Finding:	Small intestine
Appearance:	T
Sample Diagnosis (from Pathology Verification):	Gastrointestinal stromal tumor of small intestine
Normal:	0%
Lesional:	0%
Tumor:	90%
Tumor Hypo/Acellular Stroma:	10%
Tumor Hypercellular Stroma:	0%
Necrosis:	0%
Pathology Verification notes from H&E review:	Tumor Stroma (Hypo/Acellular): Fibrosis, Inflammatory cells
CASE Diagnosis (from medical center path report):	Gastrointestinal stromal tumor of small intestine
Age:	78
Gender:	Male
Tumor Grade:	Not Reported

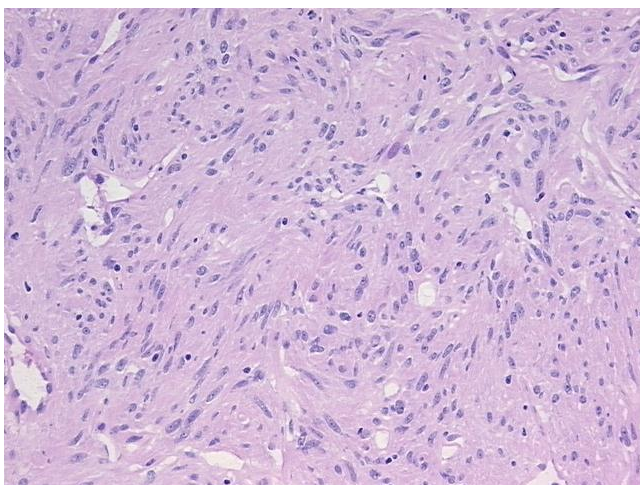


[View online »](#)

Minimum Stage Grouping:	Not Reported
T (Extent of Primary Tumor):	Not Reported
N (Lymph node metastasis):	Not Reported
M (Distant metastasis):	Not Reported
Diagnostic Test Results:	S100 protein,Negative; Desmin ! by IHC,Negative; CD34 ~ HPCA ! by IHC,Negative; MSA ~ Muscle Specific Actin,Positive, weak; CD117 ~ C-kit ~ SCFR ! by IHC,Positive
Storage:	Store frozen tissue sections at -80°C.
Stability:	All frozen tissue sections are stable for 1 year from date of purchase if stored at -80°C without repeated freeze/thaws.

Product images:

4x Image



20x Image