

Product datasheet for **CS626178**

Frozen Tissue Sections, Endometrium

Product data:

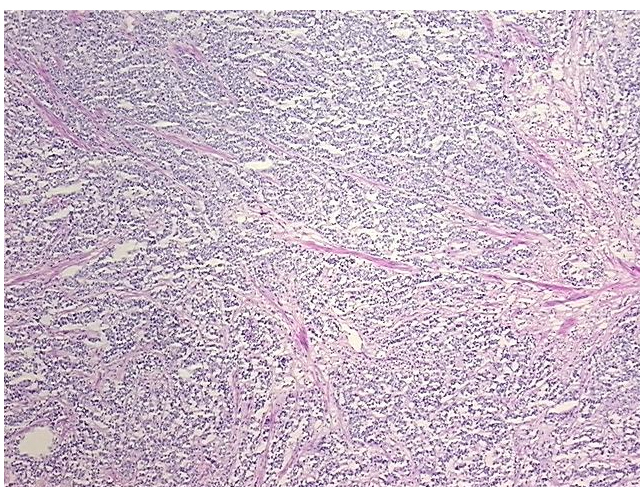
Product Type:	Frozen Sections
Disease State:	Cancer
Diagnosis Category:	Endometrial Cancer
Tissue:	Endometrium
Frozen Sample ID:	FR65EE0471
Case ID:	CU0000006127
Tissue of Origin:	Endometrium
Site of Finding:	Pelvis
Appearance:	T
Sample Diagnosis (from Pathology Verification):	Adenocarcinoma of endometrium, endometrioid, metastatic
Normal:	0%
Lesional:	0%
Tumor:	80%
Tumor Hypo/Acellular Stroma:	0%
Tumor Hypercellular Stroma:	10%
Necrosis:	10%
Pathology Verification notes from H&E review:	Tumor Stroma (Cellular): Inflammatory cells
CASE Diagnosis (from medical center path report):	Adenocarcinoma of endometrium, endometrioid
Age:	72
Gender:	Female
Tumor Grade:	FIGO G3: Poorly differentiated



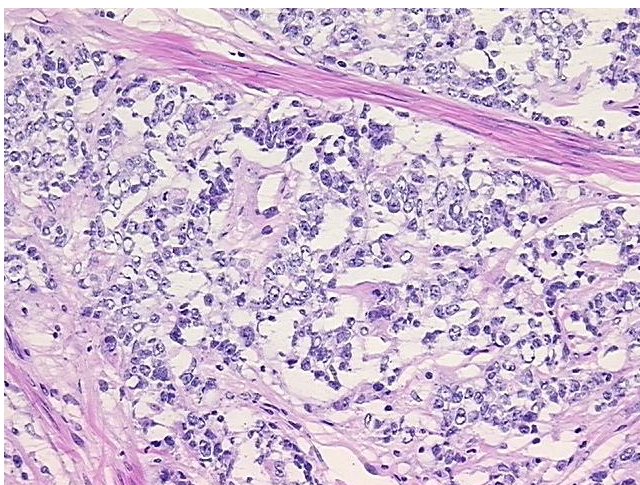
[View online »](#)

Minimum Stage Grouping:	IV
T (Extent of Primary Tumor):	T3a
N (Lymph node metastasis):	NX
M (Distant metastasis):	M1
Storage:	Store frozen tissue sections at -80°C.
Stability:	All frozen tissue sections are stable for 1 year from date of purchase if stored at -80°C without repeated freeze/thaws.

Product images:



4x Image



20x Image