

## Product datasheet for **CS625932**

### Frozen Tissue Sections, Thyroid gland

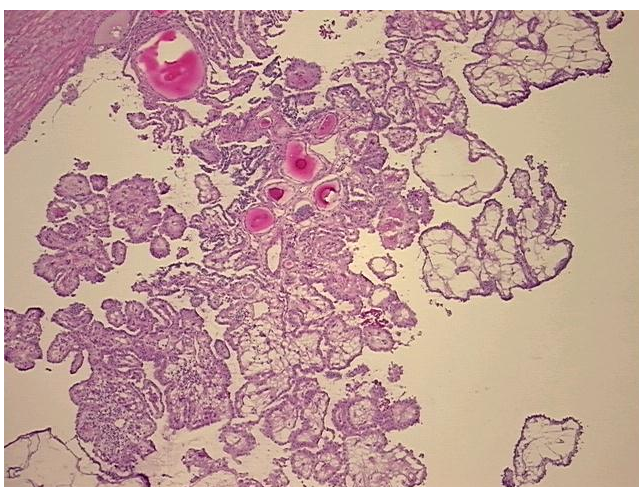
#### Product data:

|   |   |
|---|---|
| Product Type:                                     | Frozen Sections                         |
| Disease State:                                    | Cancer                                  |
| Diagnosis Category:                               | Thyroid Cancer                          |
| Tissue:   | Thyroid gland                           |
| Frozen Sample ID:                                 | FR00027D9F                              |
| Case ID:  | CU0000006096                            |
| Tissue of Origin:                                 | Thyroid gland                           |
| Site of Finding:                                  | Thyroid gland                           |
| Appearance:                                       | T                                       |
| Sample Diagnosis (from Pathology Verification):   | Carcinoma of thyroid, papillary         |
| Normal:   | 0%                                      |
| Lesional:   | 0%                                      |
| Tumor:  | 20%                                     |
| Tumor Hypo/Acellular Stroma:                      | 60%                                     |
| Tumor Hypercellular Stroma:                       | 0%                                      |
| Necrosis:   | 20%                                     |
| Pathology Verification notes from H&E review:     | Tumor Stroma (Hypo/Acellular): Fibrosis |
| CASE Diagnosis (from medical center path report): | Carcinoma of thyroid, papillary         |
| Age:  | 45                                      |
| Gender:   | Male                                    |
| Tumor Grade:                                      | Not Reported                            |

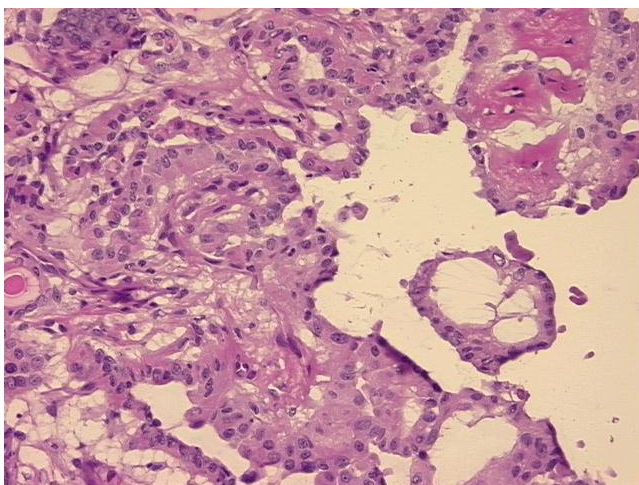


[View online »](#)

|                              |  |
|------------------------------|--|
| Minimum Stage Grouping:      | I  |
| T (Extent of Primary Tumor): | T1   |
| N (Lymph node metastasis):   | NX   |
| M (Distant metastasis):      | MX   |
| Storage:                     | Store frozen tissue sections at -80°C.   |
| Stability:                   | All frozen tissue sections are stable for 1 year from date of purchase if stored at -80°C without repeated freeze/thaws. |

**Product images:**

4x Image



20x Image