

Product datasheet for CS625627

Frozen Tissue Sections, Stomach

Product data:

Product Type:	Frozen Sections
Disease State:	Other Disease
Diagnosis Category:	Gastritis
Tissue:	Stomach
Frozen Sample ID:	FR00026017
Case ID:	CU0000006049
Tissue of Origin:	Stomach
Site of Finding:	Stomach
Appearance:	L
Sample Diagnosis (from Pathology Verification):	Gastritis, chronic
Normal:	0%
Lesional:	100%
Tumor:	0%
Tumor Hypo/Acellular Stroma:	0%
Tumor Hypercellular Stroma:	0%
Necrosis:	0%
Pathology Verification notes from H&E review:	Inflammation: Mild Mixed inflammatory infiltrate; Non Tumor Structures: 10% Mucosa, 10% Submucosa, 80% Muscle; Other Features/Comments: Chronic gastritis with focal activity
CASE Diagnosis (from medical center path report):	Pancreatitis, chronic
Age:	38
Gender:	Female
Diagnostic Test Results:	CD34 ~ HPCA ! by IHC,Negative; CD117 ~ C-kit ~ SCFR ! by IHC,Negative

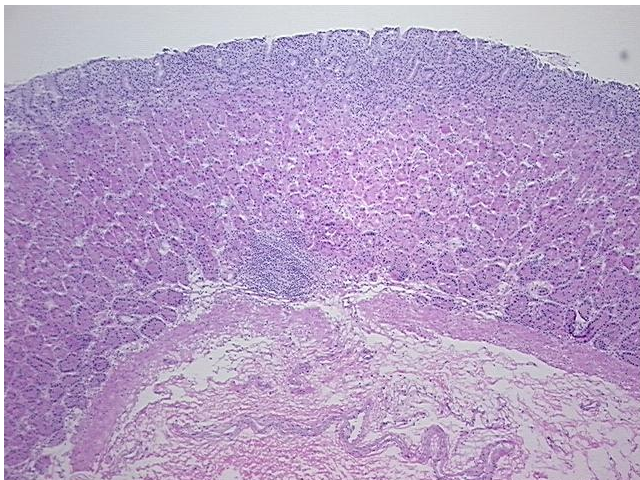


[View online »](#)

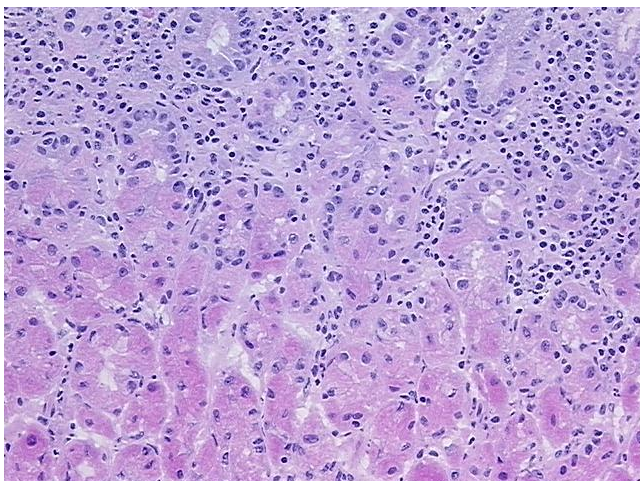
Storage: Store frozen tissue sections at -80°C .

Stability: All frozen tissue sections are stable for 1 year from date of purchase if stored at -80°C without repeated freeze/thaws.

Product images:



4x Image



20x Image