

Product datasheet for **CS625542**

Frozen Tissue Sections, Skin

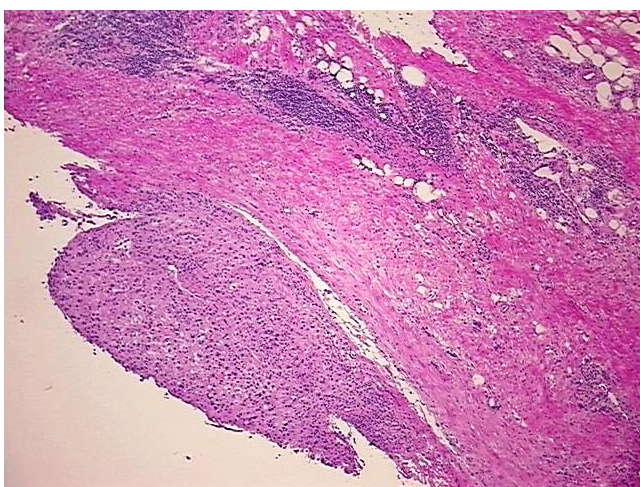
Product data:

Product Type:	Frozen Sections
Disease State:	Cancer
Diagnosis Category:	Melanoma
Tissue:	Skin
Frozen Sample ID:	FR00025C6D
Case ID:	CU0000006040
Tissue of Origin:	Skin
Site of Finding:	Lymph node
Appearance:	Tumor
Sample Diagnosis (from Pathology Verification):	Malignant melanoma, metastatic
Normal:	0%
Lesional:	0%
Tumor:	15%
Tumor Hypo/Acellular Stroma:	70%
Tumor Hypercellular Stroma:	15%
Necrosis:	0%
Pathology Verification notes from H&E review:	fibrotic tissue with metastatic melanoma and scattered lymphoid infiltrates
CASE Diagnosis (from medical center path report):	Malignant melanoma, metastatic
Age:	57
Gender:	Male
Tumor Grade:	Not Reported

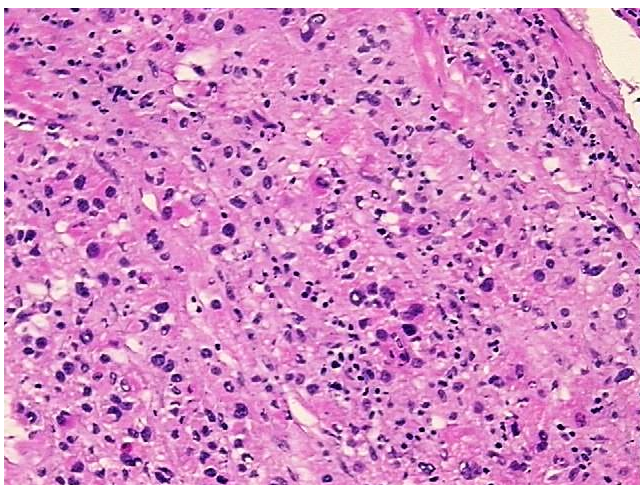


[View online »](#)

Minimum Stage Grouping:	IIIB
T (Extent of Primary Tumor):	pTX
N (Lymph node metastasis):	pN1b
M (Distant metastasis):	pMX
Storage:	Store frozen tissue sections at -80°C.
Stability:	All frozen tissue sections are stable for 1 year from date of purchase if stored at -80°C without repeated freeze/thaws.

Product images:

4x Image



20x Image