

Product datasheet for **CS625064**

Frozen Tissue Sections, Breast

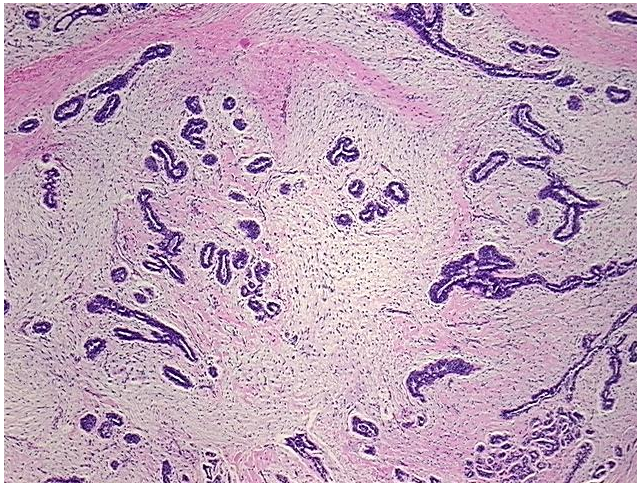
Product data:

Product Type:	Frozen Sections
Disease State:	Other Disease
Diagnosis Category:	Benign Tumors
Tissue:	Breast
Frozen Sample ID:	FR0001F652
Case ID:	CU00000005953
Tissue of Origin:	Breast
Site of Finding:	Breast
Appearance:	T
Sample Diagnosis (from Pathology Verification):	Fibroadenoma of breast
Normal:	0%
Lesional:	0%
Tumor:	30%
Tumor Hypo/Acellular Stroma:	0%
Tumor Hypercellular Stroma:	70%
Necrosis:	0%
Pathology Verification notes from H&E review:	tumor stroma contains loose cellular connective tissue
CASE Diagnosis (from medical center path report):	Fibroadenoma of breast
Age:	22
Gender:	Female
Tumor Grade:	Not Reported

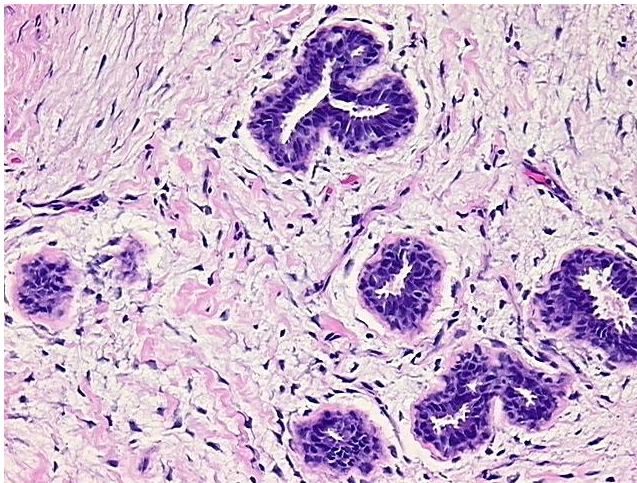

[View online »](#)

Minimum Stage Grouping:	Not Reported
T (Extent of Primary Tumor):	Not Reported
N (Lymph node metastasis):	Not Reported
M (Distant metastasis):	Not Reported
Storage:	Store frozen tissue sections at -80°C.
Stability:	All frozen tissue sections are stable for 1 year from date of purchase if stored at -80°C without repeated freeze/thaws.

Product images:



4x Image



20x Image