

## Product datasheet for CS624869

### Frozen Tissue Sections, Breast

#### Product data:

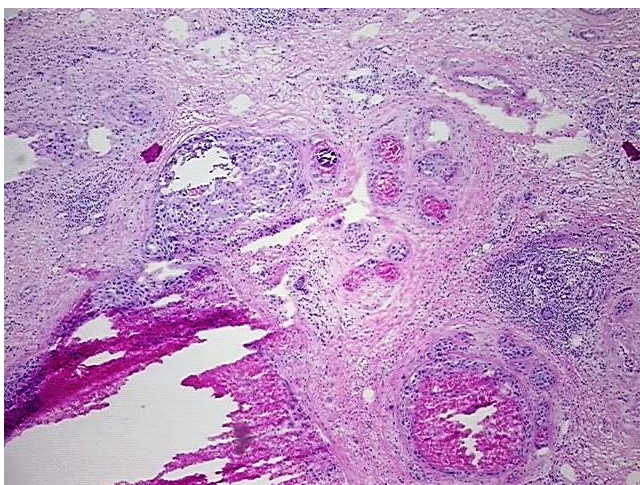
Product Type:	Frozen Sections
Disease State:	Cancer
Diagnosis Category:	Breast Cancer
Tissue:	Breast
Frozen Sample ID:	FR00020AB6
Case ID:	CU0000005910
Tissue of Origin:	Breast
Site of Finding:	Breast
Appearance:	Tumor
Sample Diagnosis (from Pathology Verification):	Adenocarcinoma of breast, ductal
Normal:	75%
Lesional:	0%
Tumor:	15%
Tumor Hypo/Acellular Stroma:	0%
Tumor Hypercellular Stroma:	0%
Necrosis:	10%
Pathology Verification notes from H&E review:	normal: 20% glandular epithelium, 70% stroma with focal, mild lymphocytic infiltrate, 10% adipose tissue
CASE Diagnosis (from medical center path report):	Adenocarcinoma of breast, ductal
Age:	52
Gender:	Female
Tumor Grade:	NSABP Grade: Nuclear 3 of 3 & Histologic 3 of 3



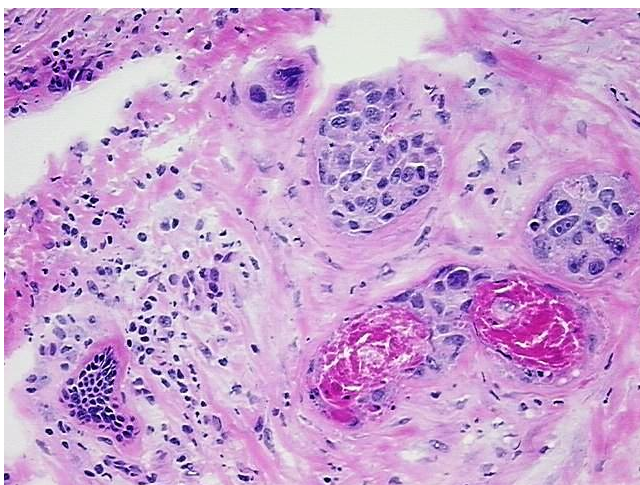
[View online »](#)

Minimum Stage Grouping:	IIB
T (Extent of Primary Tumor):	pT2
N (Lymph node metastasis):	pN1a
M (Distant metastasis):	pMX
Storage:	Store frozen tissue sections at -80°C.
Stability:	All frozen tissue sections are stable for 1 year from date of purchase if stored at -80°C without repeated freeze/thaws.

### Product images:



4x Image



20x Image