

## Product datasheet for **CS624621**

### Frozen Tissue Sections, Lymphoid tissue

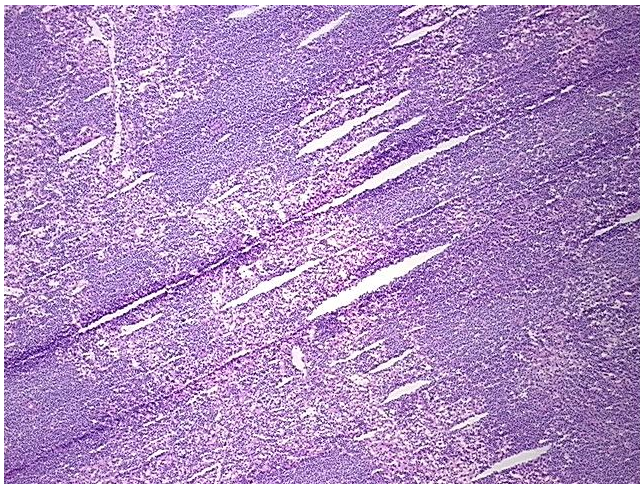
#### Product data:

Product Type:	Frozen Sections
Disease State:	Cancer
Diagnosis Category:	Leukemia
Tissue:	Lymphoid tissue
Frozen Sample ID:	FR000207D3
Case ID:	CU0000005877
Tissue of Origin:	Lymphoid tissue
Site of Finding:	Spleen
Appearance:	T
Sample Diagnosis (from Pathology Verification):	Leukemia, lymphocytic, chronic
Normal:	15%
Lesional:	0%
Tumor:	85%
Tumor Hypo/Acellular Stroma:	0%
Tumor Hypercellular Stroma:	0%
Necrosis:	0%
CASE Diagnosis (from medical center path report):	Leukemia, lymphocytic, chronic
Age:	49
Gender:	Male
Tumor Grade:	Not Reported
Minimum Stage Grouping:	IV

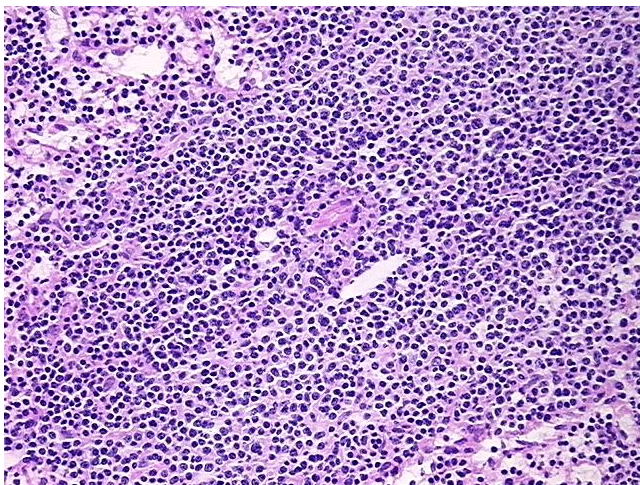


[View online »](#)

T (Extent of Primary Tumor):	Not applicable
N (Lymph node metastasis):	Not applicable
M (Distant metastasis):	Not applicable
Storage:	Store frozen tissue sections at -80°C.
Stability:	All frozen tissue sections are stable for 1 year from date of purchase if stored at -80°C without repeated freeze/thaws.

**Product images:**

4x Image



20x Image