

Product datasheet for **CS624339**

Frozen Tissue Sections, Lung

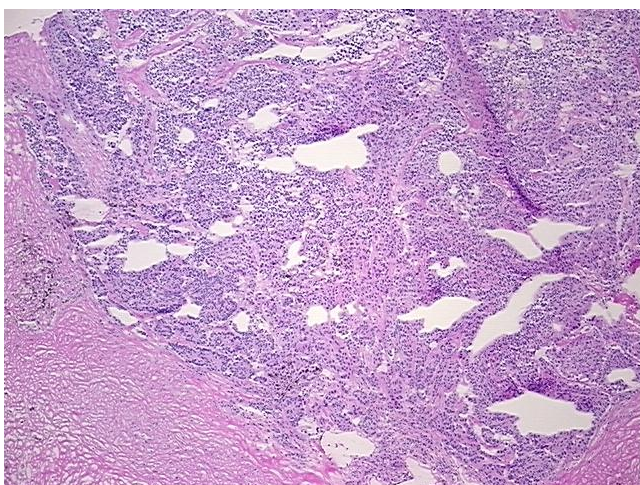
Product data:

Product Type:	Frozen Sections
Disease State:	Cancer
Diagnosis Category:	Carcinoid/Neuroendocrine Tumors
Tissue:	Lung
Frozen Sample ID:	FR00020149
Case ID:	CU0000005852
Tissue of Origin:	Lung
Site of Finding:	Lymph node
Appearance:	T
Sample Diagnosis (from Pathology Verification):	Tumor of lung, carcinoid, atypical, metastatic
Normal:	0%
Lesional:	0%
Tumor:	25%
Tumor Hypo/Acellular Stroma:	75%
Tumor Hypercellular Stroma:	0%
Necrosis:	0%
Pathology Verification notes from H&E review:	Atypical carcinoid tumor metastatic to lymph node; hypocellular tumor stoma: densely fibrotic
CASE Diagnosis (from medical center path report):	Tumor of lung, carcinoid, atypical
Age:	69
Gender:	Male
Tumor Grade:	Not Reported

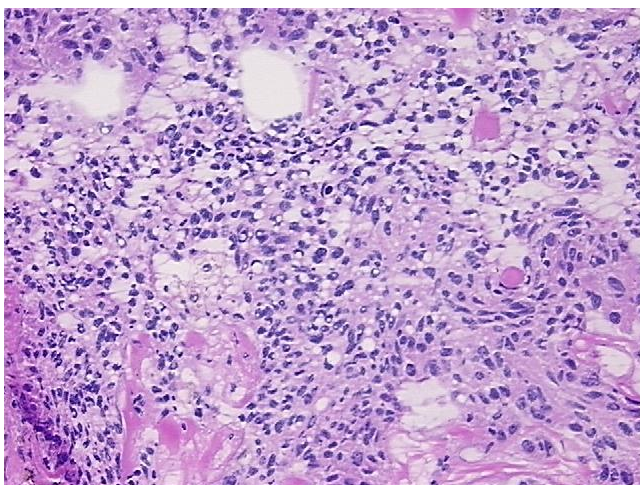


[View online »](#)

Minimum Stage Grouping:	Not Reported
T (Extent of Primary Tumor):	Not Reported
N (Lymph node metastasis):	Not Reported
M (Distant metastasis):	Not Reported
Diagnostic Test Results:	Neuron specific enolase ~ NSE ! by IHC,Positive; Synaptophysin ~ SYN ! by IHC,Positive; Chromogranin A ~ Parathyroid secretory protein 1 ! by IHC,Positive; CD117 ~ C-kit ~ SCFR ! by IHC,Negative; Thyroid transcription factor 1 ~ TTF1 ! by IHC
Storage:	Store frozen tissue sections at -80°C.
Stability:	All frozen tissue sections are stable for 1 year from date of purchase if stored at -80°C without repeated freeze/thaws.

Product images:

4x Image



20x Image