

## Product datasheet for **CS623356**

### Frozen Tissue Sections, Kidney

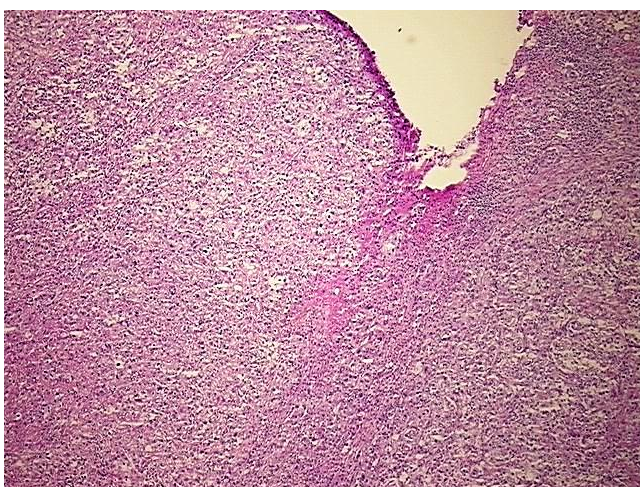
#### Product data:

Product Type:	Frozen Sections
Disease State:	Cancer
Diagnosis Category:	Renal Cell Carcinoma
Tissue:	Kidney
Frozen Sample ID:	FR0001D2C2
Case ID:	CU0000005795
Tissue of Origin:	Kidney
Site of Finding:	Kidney
Appearance:	Tumor
Sample Diagnosis (from Pathology Verification):	Carcinoma of kidney, renal cell
Normal:	0%
Lesional:	0%
Tumor:	80%
Tumor Hypo/Acellular Stroma:	0%
Tumor Hypercellular Stroma:	10%
Necrosis:	10%
Pathology Verification notes from H&E review:	Tumor: most likely renal origin; Tumor Stroma (Cellular): Inflammatory cells; Other Features/Comments: it may be chromophobe subtype
CASE Diagnosis (from medical center path report):	Carcinoma of kidney, renal cell
Age:	60
Gender:	Female
Tumor Grade:	Fuhrman G3: Nuclei very irregular

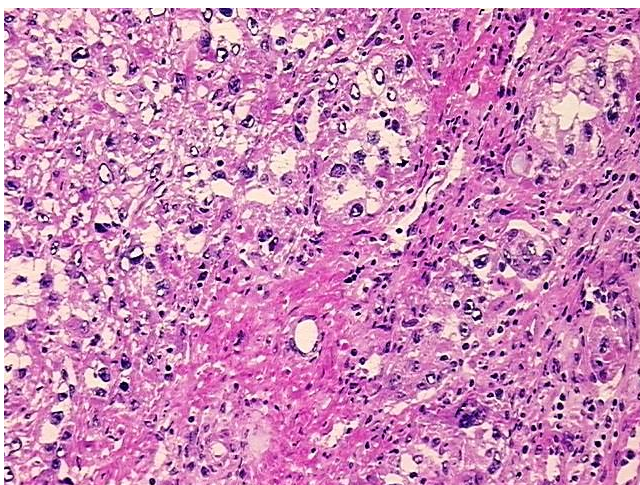


[View online »](#)

Minimum Stage Grouping:	III
T (Extent of Primary Tumor):	pT3b
N (Lymph node metastasis):	pNX
M (Distant metastasis):	pMX
Storage:	Store frozen tissue sections at -80°C.
Stability:	All frozen tissue sections are stable for 1 year from date of purchase if stored at -80°C without repeated freeze/thaws.

**Product images:**

4x Image



20x Image