

## Product datasheet for **CS623259**

### Frozen Tissue Sections, Lymphoid tissue

#### Product data:

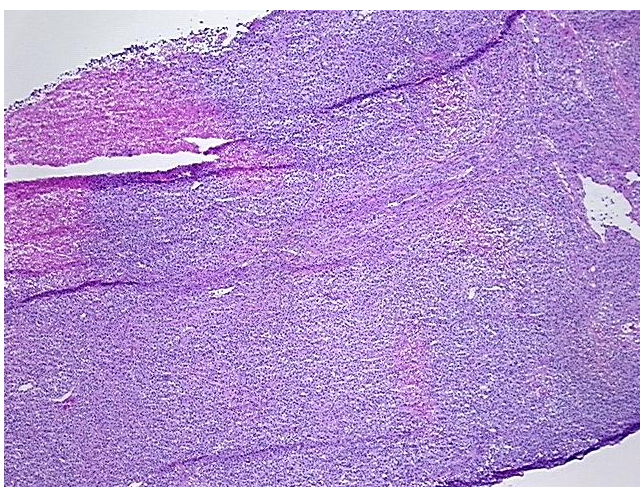
|   |   |
|---|---|
| Product Type:                                     | Frozen Sections   |
| Disease State:                                    | Other Disease   |
| Diagnosis Category:                               | Lymphoproliferative Disorder  |
| Tissue:   | Lung  |
| Frozen Sample ID:                                 | FR0001D121  |
| Case ID:  | CU0000005786  |
| Tissue of Origin:                                 | Lymphoid tissue   |
| Site of Finding:                                  | Lung  |
| Appearance:                                       | T   |
| Sample Diagnosis (from Pathology Verification):   | Lymphoproliferative disorder, post-transplant   |
| Normal:   | 10%   |
| Lesional:   | 0%  |
| Tumor:  | 75%   |
| Tumor Hypo/Acellular Stroma:                      | 0%  |
| Tumor Hypercellular Stroma:                       | 0%  |
| Necrosis:   | 15%   |
| Pathology Verification notes from H&E review:     | tumor: features of large cell lymphoma (monomorphic post transplant lymphoproliferative disorder) |
| CASE Diagnosis (from medical center path report): | Lymphoproliferative disorder, post-transplant   |
| Age:  | 57  |
| Gender:   | Male  |
| Tumor Grade:                                      | Not Reported  |



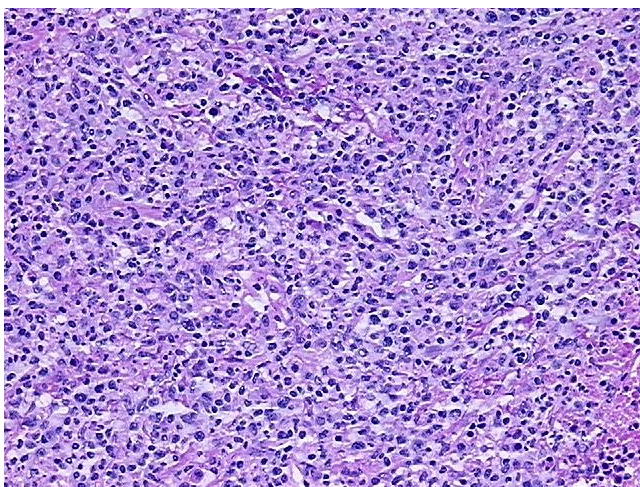
[View online »](#)

|                              |  |
|------------------------------|--|
| Minimum Stage Grouping:      | Not Reported   |
| T (Extent of Primary Tumor): | Not Reported   |
| N (Lymph node metastasis):   | Not Reported   |
| M (Distant metastasis):      | Not Reported   |
| Storage:                     | Store frozen tissue sections at -80°C.   |
| Stability:                   | All frozen tissue sections are stable for 1 year from date of purchase if stored at -80°C without repeated freeze/thaws. |

### Product images:



4x Image



20x Image