

Product datasheet for **CS623258**

Frozen Tissue Sections, Lymphoid tissue

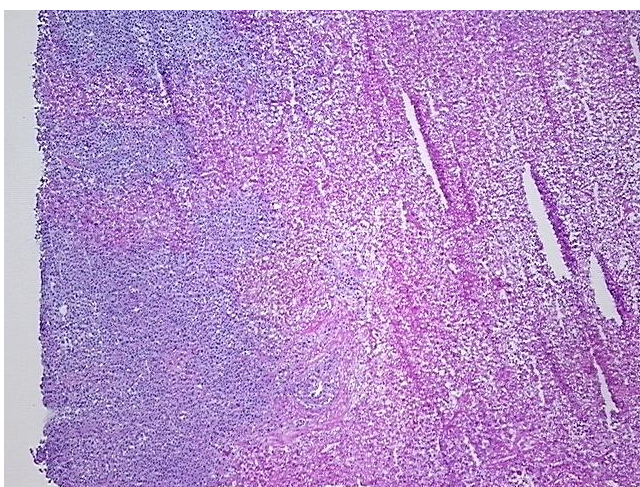
Product data:

Product Type:	Frozen Sections
Disease State:	Other Disease
Diagnosis Category:	Lymphoproliferative Disorder
Tissue:	Lung
Frozen Sample ID:	FR0001D120
Case ID:	CU0000005786
Tissue of Origin:	Lymphoid tissue
Site of Finding:	Lung
Appearance:	T
Sample Diagnosis (from Pathology Verification):	Lymphoproliferative disorder, post-transplant
Normal:	5%
Lesional:	0%
Tumor:	15%
Tumor Hypo/Acellular Stroma:	0%
Tumor Hypercellular Stroma:	0%
Necrosis:	80%
Pathology Verification notes from H&E review:	tumor: features of large cell lymphoma (monomorphic post transplant lymphoproliferative disorder)
CASE Diagnosis (from medical center path report):	Lymphoproliferative disorder, post-transplant
Age:	57
Gender:	Male
Tumor Grade:	Not Reported

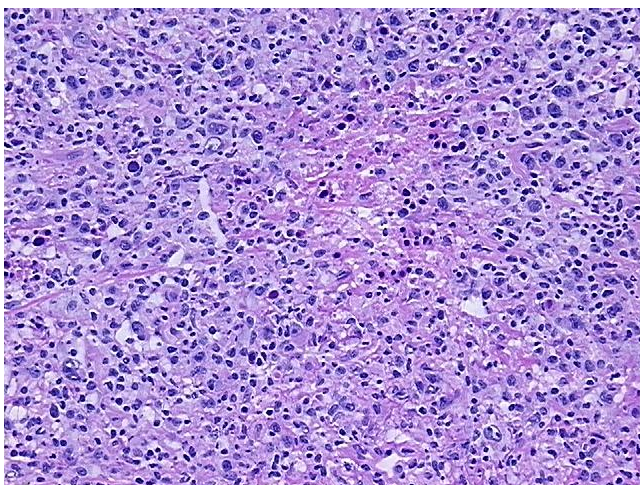


[View online »](#)

Minimum Stage Grouping:	Not Reported
T (Extent of Primary Tumor):	Not Reported
N (Lymph node metastasis):	Not Reported
M (Distant metastasis):	Not Reported
Storage:	Store frozen tissue sections at -80°C.
Stability:	All frozen tissue sections are stable for 1 year from date of purchase if stored at -80°C without repeated freeze/thaws.

Product images:

4x Image



20x Image