

Product datasheet for **CS623257**

Frozen Tissue Sections, Lymphoid tissue

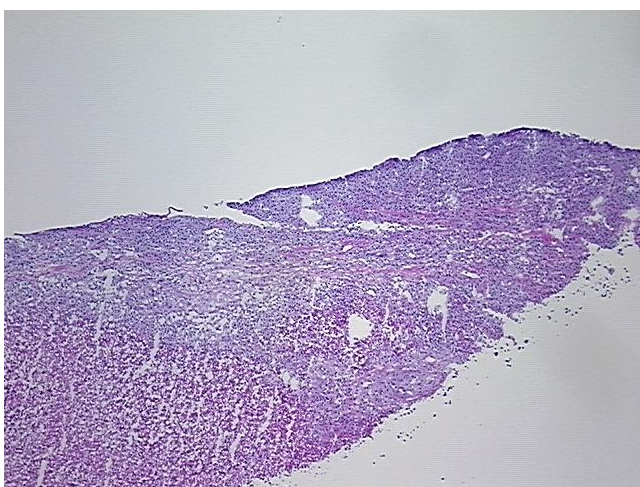
Product data:

| | |
|---|---|
| Product Type: | Frozen Sections |
| Disease State: | Other Disease |
| Diagnosis Category: | Lymphoproliferative Disorder |
| Tissue: | Lung |
| Frozen Sample ID: | FR0001D11F |
| Case ID: | CU0000005786 |
| Tissue of Origin: | Lymphoid tissue |
| Site of Finding: | Lung |
| Appearance: | T |
| Sample Diagnosis (from Pathology Verification): | Lymphoproliferative disorder, post-transplant |
| Normal: | 5% |
| Lesional: | 0% |
| Tumor: | 10% |
| Tumor Hypo/Acellular Stroma: | 0% |
| Tumor Hypercellular Stroma: | 0% |
| Necrosis: | 85% |
| Pathology Verification notes from H&E review: | tumor: features of large cell lymphoma (monomorphic post transplant lymphoproliferative disorder) |
| CASE Diagnosis (from medical center path report): | Lymphoproliferative disorder, post-transplant |
| Age: | 57 |
| Gender: | Male |
| Tumor Grade: | Not Reported |

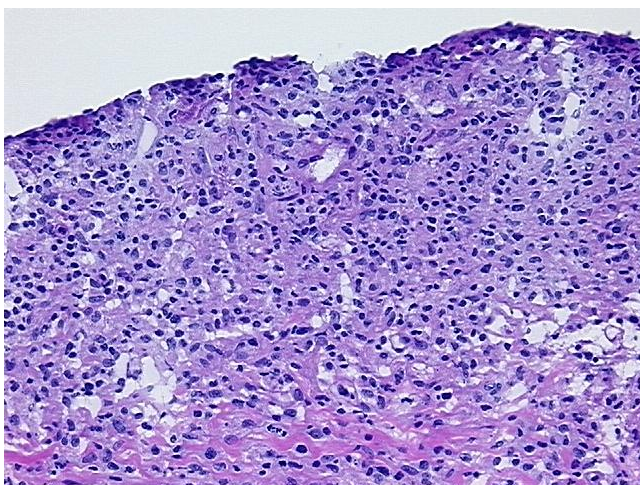


[View online »](#)

| | |
|------------------------------|--|
| Minimum Stage Grouping: | Not Reported |
| T (Extent of Primary Tumor): | Not Reported |
| N (Lymph node metastasis): | Not Reported |
| M (Distant metastasis): | Not Reported |
| Storage: | Store frozen tissue sections at -80°C. |
| Stability: | All frozen tissue sections are stable for 1 year from date of purchase if stored at -80°C without repeated freeze/thaws. |

Product images:

4x Image



20x Image