

Product datasheet for **CS623241**

Frozen Tissue Sections, Soft tissue

Product data:

Product Type:	Frozen Sections
Disease State:	Cancer
Diagnosis Category:	Sarcoma
Tissue:	Soft tissue
Frozen Sample ID:	FR0001D0DF
Case ID:	CU0000005784
Tissue of Origin:	Soft tissue
Site of Finding:	Chest wall
Appearance:	Tumor
Sample Diagnosis (from Pathology Verification):	Sarcoma, synovial, monophasic
Normal:	0%
Lesional:	0%
Tumor:	99%
Tumor Hypo/Acellular Stroma:	0%
Tumor Hypercellular Stroma:	1%
Necrosis:	0%
CASE Diagnosis (from medical center path report):	Sarcoma, synovial, monophasic
Age:	28
Gender:	Male
Tumor Grade:	AJCC G3: Poorly differentiated
Minimum Stage Grouping:	II



[View online »](#)

T (Extent of Primary Tumor): pTX

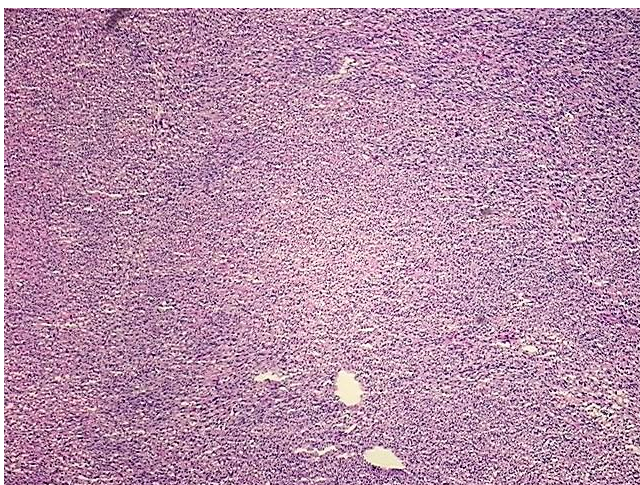
N (Lymph node metastasis): pNX

M (Distant metastasis): pMX

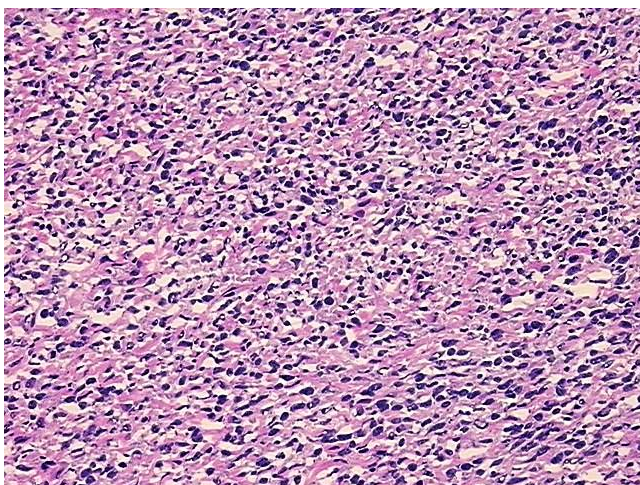
Storage: Store frozen tissue sections at -80°C.

Stability: All frozen tissue sections are stable for 1 year from date of purchase if stored at -80°C without repeated freeze/thaws.

Product images:



4x Image



20x Image