

## Product datasheet for **CS623237**

### Frozen Tissue Sections, Breast

#### Product data:

Product Type:	Frozen Sections
Disease State:	Other Disease
Diagnosis Category:	Fibrocystic Breast
Tissue:	Breast
Frozen Sample ID:	FR5B338443
Case ID:	CU0000005783
Tissue of Origin:	Breast
Site of Finding:	Breast
Appearance:	L
Sample Diagnosis (from Pathology Verification):	Fibrocystic breast disease
Normal:	60%
Lesional:	40%
Tumor:	0%
Tumor Hypo/Acellular Stroma:	0%
Tumor Hypercellular Stroma:	0%
Necrosis:	0%
Pathology Verification notes from H&E review:	Non Tumor Structures: 50% Glandular epithelium, 40% Stroma, 10% Adipose tissue
CASE Diagnosis (from medical center path report):	Carcinoma in situ of breast, ductal
Age:	41
Gender:	Female
Tumor Grade:	DCIS: High grade



[View online »](#)

T (Extent of Primary Tumor):

Tis

N (Lymph node metastasis):

N0

M (Distant metastasis):

MX

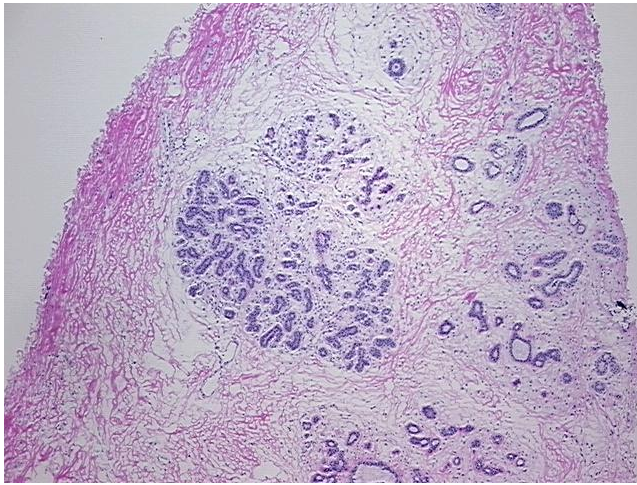
Storage:

Store frozen tissue sections at -80°C.

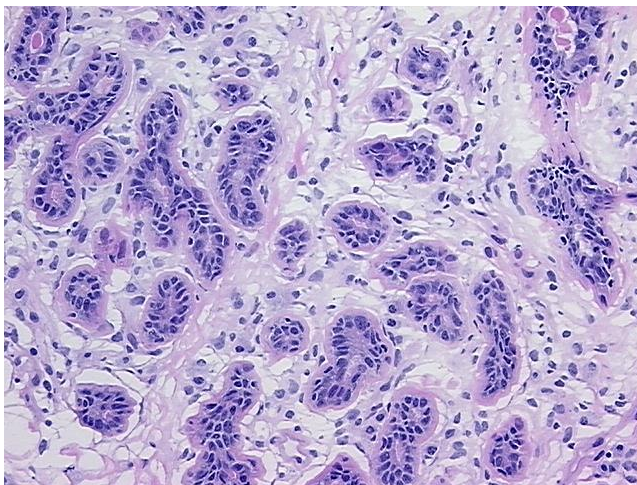
Stability:

All frozen tissue sections are stable for 1 year from date of purchase if stored at -80°C without repeated freeze/thaws.

### Product images:



4x Image



20x Image