

Product datasheet for CS623221

Frozen Tissue Sections, Breast

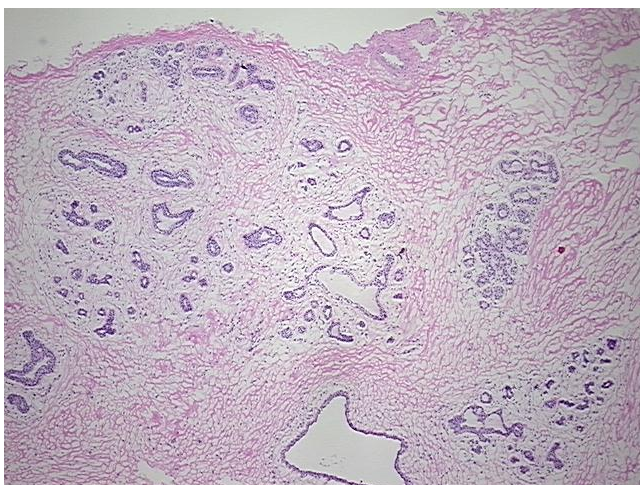
Product data:

Product Type:	Frozen Sections
Disease State:	Other Disease
Diagnosis Category:	Hyperplasia
Tissue:	Breast
Frozen Sample ID:	FR0001D071
Case ID:	CU0000005783
Tissue of Origin:	Breast
Site of Finding:	Breast
Appearance:	L
Sample Diagnosis (from Pathology Verification):	Ductal hyperplasia of breast
Normal:	0%
Lesional:	100%
Tumor:	0%
Tumor Hypo/Acellular Stroma:	0%
Tumor Hypercellular Stroma:	0%
Necrosis:	0%
Pathology Verification notes from H&E review:	Lesion (100%): Fibrocystic changes to breast 95%, Ductal hyperplasia of breast 5%; Non Tumor Structures: 50% Glandular epithelium, 20% Stroma, 30% Adipose tissue
CASE Diagnosis (from medical center path report):	Carcinoma in situ of breast, ductal
Age:	41
Gender:	Female
Tumor Grade:	DCIS: High grade

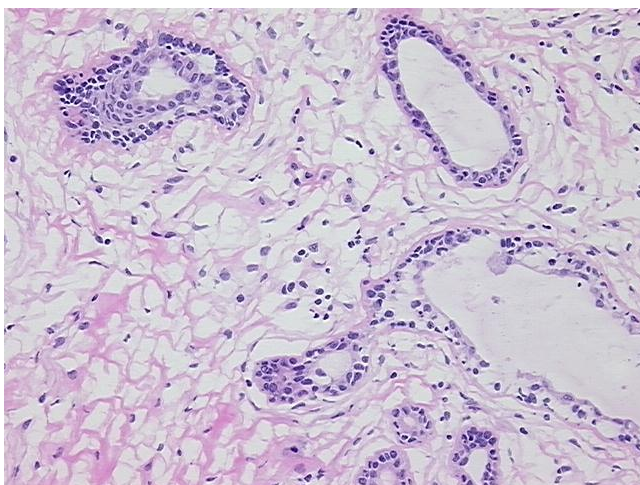


[View online »](#)

T (Extent of Primary Tumor):	Tis
N (Lymph node metastasis):	N0
M (Distant metastasis):	MX
Storage:	Store frozen tissue sections at -80°C.
Stability:	All frozen tissue sections are stable for 1 year from date of purchase if stored at -80°C without repeated freeze/thaws.

Product images:

4x Image



20x Image