

Product datasheet for **CS622946**

Frozen Tissue Sections, Colon: sigmoid

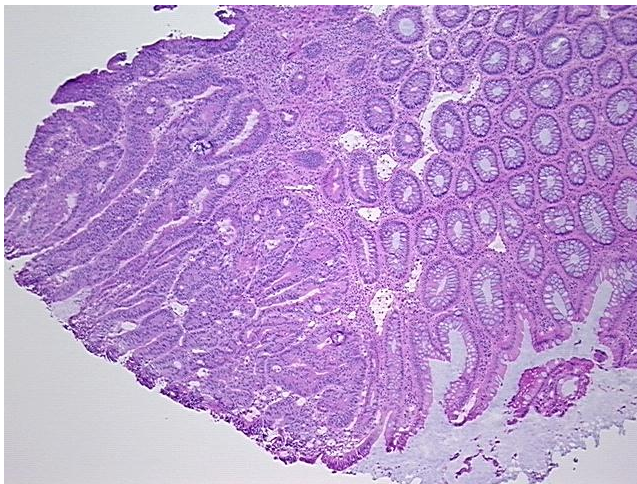
Product data:

Product Type:	Frozen Sections
Disease State:	Cancer
Diagnosis Category:	Colorectal Cancer
Tissue:	Colon
Frozen Sample ID:	FR0001CD2F
Case ID:	CU00000005769
Tissue of Origin:	Colon: sigmoid
Site of Finding:	Colon: sigmoid
Appearance:	T
Sample Diagnosis (from Pathology Verification):	Adenocarcinoma of colon
Normal:	89%
Lesional:	0%
Tumor:	10%
Tumor Hypo/Acellular Stroma:	0%
Tumor Hypercellular Stroma:	1%
Necrosis:	0%
Pathology Verification notes from H&E review:	normal:80% mucosa, 9% submucosa
CASE Diagnosis (from medical center path report):	Adenocarcinoma of colon
Age:	61
Gender:	Male
Tumor Grade:	AJCC G2: Moderately differentiated

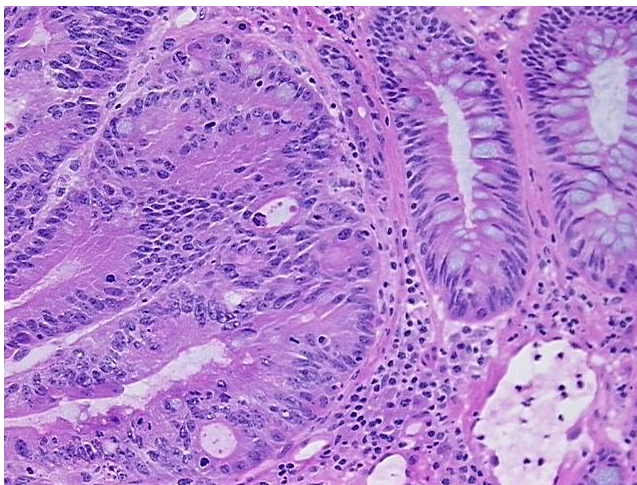

[View online »](#)

Minimum Stage Grouping:	II
T (Extent of Primary Tumor):	T3
N (Lymph node metastasis):	N0
M (Distant metastasis):	MX
Storage:	Store frozen tissue sections at -80°C.
Stability:	All frozen tissue sections are stable for 1 year from date of purchase if stored at -80°C without repeated freeze/thaws.

Product images:



4x Image



20x Image