

## Product datasheet for **CS622748**

### Frozen Tissue Sections, Soft tissue

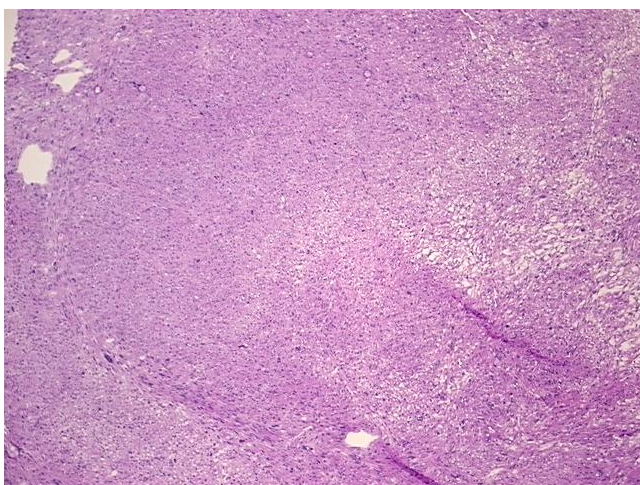
#### Product data:

Product Type:	Frozen Sections
Disease State:	Cancer
Diagnosis Category:	Sarcoma
Tissue:	Soft tissue
Frozen Sample ID:	FR0001A5E2
Case ID:	CU0000005756
Tissue of Origin:	Soft tissue
Site of Finding:	Liver
Appearance:	T
Sample Diagnosis (from Pathology Verification):	Leiomyosarcoma, metastatic
Normal:	0%
Lesional:	0%
Tumor:	90%
Tumor Hypo/Acellular Stroma:	5%
Tumor Hypercellular Stroma:	5%
Necrosis:	0%
Pathology Verification notes from H&E review:	Pleomorphic leiomyosarcoma in patient with history of sarcoma of the extremities.
CASE Diagnosis (from medical center path report):	Sarcoma, metastatic
Age:	48
Gender:	Male
Tumor Grade:	Not Reported

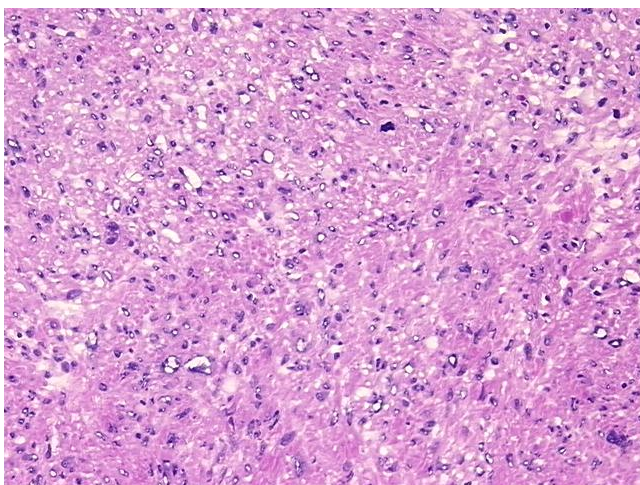


[View online »](#)

Minimum Stage Grouping:	IV
T (Extent of Primary Tumor):	TX
N (Lymph node metastasis):	NX
M (Distant metastasis):	M1
Diagnostic Test Results:	Smooth muscle actin ~ SMA ~ Alpha-SMA ! by IHC,Positive, strong; Desmin ! by IHC,Positive in scattered cells; MSA ~ Muscle Specific Actin,Positive, strong; CD117 ~ C-kit ~ SCFR ! by IHC,Negative
Storage:	Store frozen tissue sections at -80°C.
Stability:	All frozen tissue sections are stable for 1 year from date of purchase if stored at -80°C without repeated freeze/thaws.

**Product images:**

4x Image



20x Image