

## Product datasheet for **CS622389**

### Frozen Tissue Sections, Lung

#### Product data:

Product Type:	Frozen Sections
Disease State:	Other Disease
Diagnosis Category:	Chronic Obstructive Pulmonary Disease (COPD)
Tissue:	Lung
Frozen Sample ID:	FR65EDE992
Case ID:	CU0000005733
Tissue of Origin:	Lung
Site of Finding:	Lung
Appearance:	L
Sample Diagnosis (from Pathology Verification):	Bronchitis, chronic
Normal:	30%
Lesional:	70%
Tumor:	0%
Tumor Hypo/Acellular Stroma:	0%
Tumor Hypercellular Stroma:	0%
Necrosis:	0%
Pathology Verification notes from H&E review:	No normal architecture in lesional component
CASE Diagnosis (from medical center path report):	Adenocarcinoma of lung
Age:	53
Gender:	Male
Tumor Grade:	AJCC G3: Poorly differentiated



[View online »](#)

Minimum Stage Grouping: IIIA

T (Extent of Primary Tumor): T2

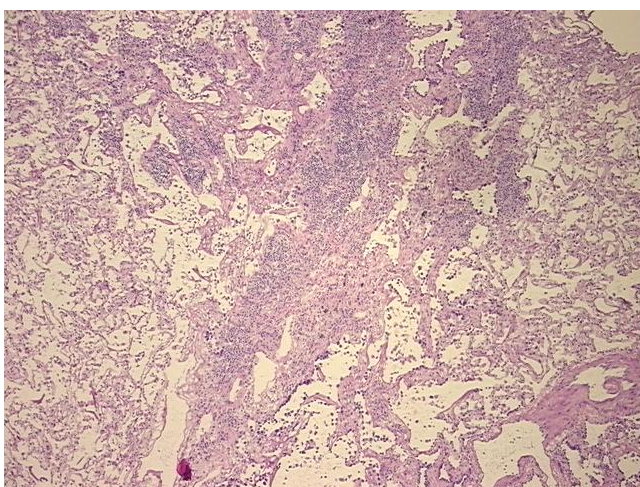
N (Lymph node metastasis): N2

M (Distant metastasis): MX

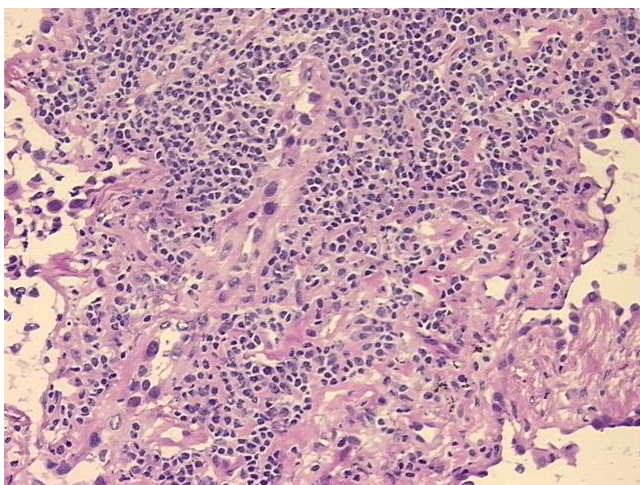
Storage: Store frozen tissue sections at -80°C.

Stability: All frozen tissue sections are stable for 1 year from date of purchase if stored at -80°C without repeated freeze/thaws.

### Product images:



4x Image



20x Image