

Product datasheet for **CS622367**

Frozen Tissue Sections, Colon: left

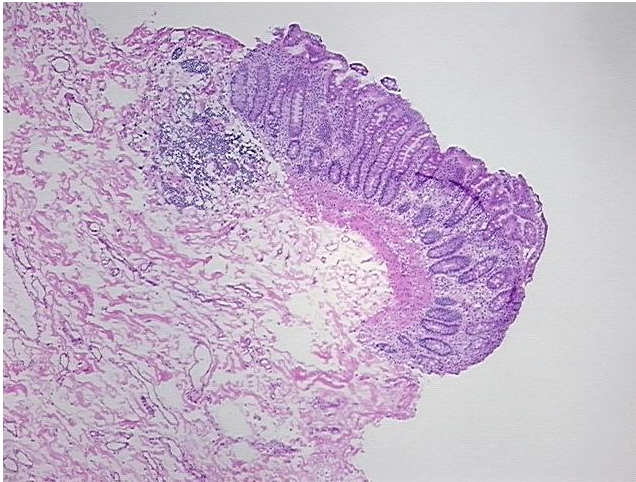
Product data:

| | |
|---|--|
| Product Type: | Frozen Sections |
| Disease State: | Other Disease |
| Diagnosis Category: | Fistula |
| Tissue: | Colon |
| Frozen Sample ID: | FR0001A29A |
| Case ID: | CU0000005732 |
| Tissue of Origin: | Colon: left |
| Site of Finding: | Colon: left |
| Appearance: | L |
| Sample Diagnosis (from Pathology Verification): | Fistula of intestine |
| Normal: | 95% |
| Lesional: | 5% |
| Tumor: | 0% |
| Tumor Hypo/Acellular Stroma: | 0% |
| Tumor Hypercellular Stroma: | 0% |
| Necrosis: | 0% |
| Pathology Verification notes from H&E review: | 10% mucosa, 40% submucosa, 50% muscle; lesional: serositis |
| CASE Diagnosis (from medical center path report): | Adenocarcinoma of colon |
| Age: | 74 |
| Gender: | Female |
| Tumor Grade: | AJCC G2: Moderately differentiated |

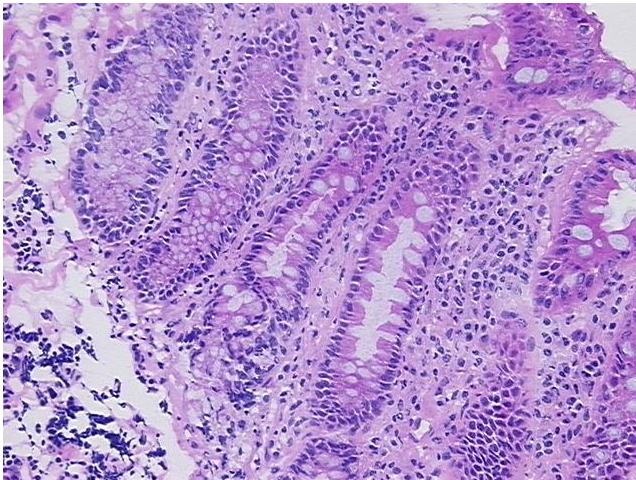


[View online »](#)

| | |
|------------------------------|--|
| Minimum Stage Grouping: | II |
| T (Extent of Primary Tumor): | T3 |
| N (Lymph node metastasis): | N0 |
| M (Distant metastasis): | MX |
| Diagnostic Test Results: | Proliferation index ~ PI,High |
| Storage: | Store frozen tissue sections at -80°C. |
| Stability: | All frozen tissue sections are stable for 1 year from date of purchase if stored at -80°C without repeated freeze/thaws. |

Product images:

4x Image



20x Image