

## Product datasheet for CS622366

### Frozen Tissue Sections, Colon: left

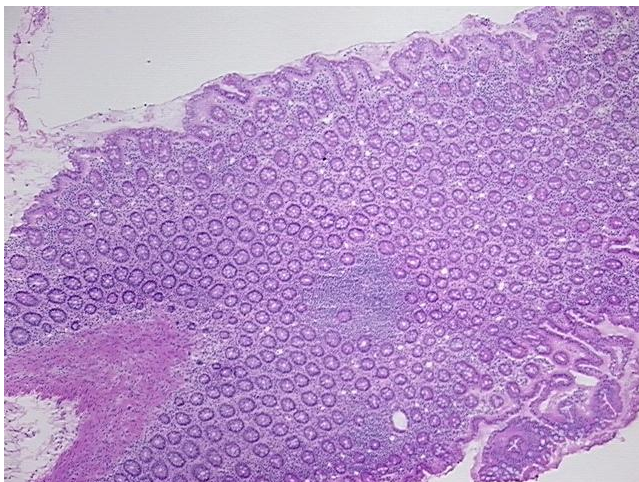
#### Product data:

Product Type:	Frozen Sections
Disease State:	Other Disease
Diagnosis Category:	Adhesion
Tissue:	Colon
Frozen Sample ID:	FR0001A299
Case ID:	CU0000005732
Tissue of Origin:	Colon: left
Site of Finding:	Colon: left
Appearance:	L
Sample Diagnosis (from Pathology Verification):	Adhesion of tissue
Normal:	95%
Lesional:	5%
Tumor:	0%
Tumor Hypo/Acellular Stroma:	0%
Tumor Hypercellular Stroma:	0%
Necrosis:	0%
Pathology Verification notes from H&E review:	15% mucosa, 30% submucosa, 55% muscle; non-neoplastic lesional: serositis
CASE Diagnosis (from medical center path report):	Adenocarcinoma of colon
Age:	74
Gender:	Female
Tumor Grade:	AJCC G2: Moderately differentiated

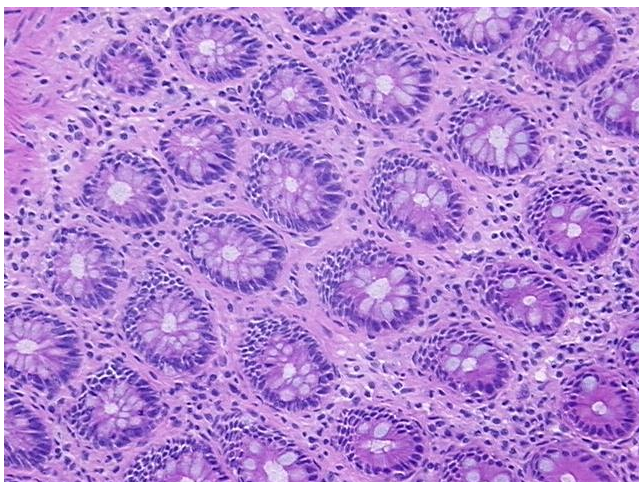


[View online »](#)

Minimum Stage Grouping:	II
T (Extent of Primary Tumor):	T3
N (Lymph node metastasis):	N0
M (Distant metastasis):	MX
Diagnostic Test Results:	Proliferation index ~ PI,High
Storage:	Store frozen tissue sections at -80°C.
Stability:	All frozen tissue sections are stable for 1 year from date of purchase if stored at -80°C without repeated freeze/thaws.

**Product images:**

4x Image



20x Image