

Product datasheet for **CS622344**

Frozen Tissue Sections, Lymphoid tissue

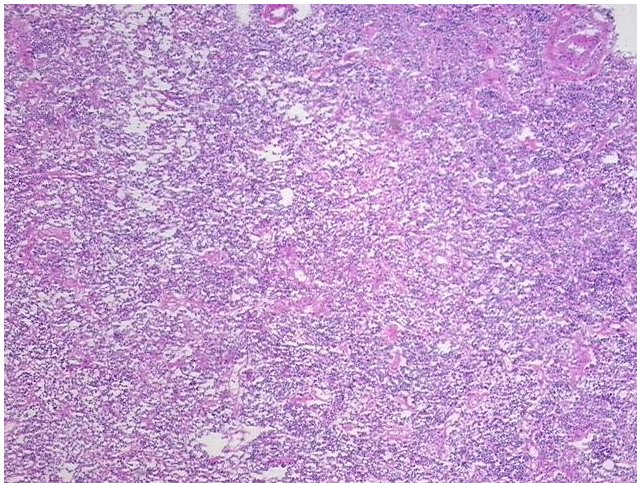
Product data:

| | |
|---|---|
| Product Type: | Frozen Sections |
| Disease State: | Cancer |
| Diagnosis Category: | Lymphoma |
| Tissue: | Lymphoid tissue |
| Frozen Sample ID: | FR0001A24B |
| Case ID: | CU0000005729 |
| Tissue of Origin: | Lymphoid tissue |
| Site of Finding: | Salivary gland |
| Appearance: | T |
| Sample Diagnosis (from Pathology Verification): | Lymphoma, extranodal marginal zone B-cell |
| Normal: | 54% |
| Lesional: | 0% |
| Tumor: | 41% |
| Tumor Hypo/Acellular Stroma: | 0% |
| Tumor Hypercellular Stroma: | 5% |
| Necrosis: | 0% |
| Pathology Verification notes from H&E review: | Several areas of the specimen show clusters and small sheets of atypical large cells which express CD20, reflecting apparent focal large cell transformation of the underlying marginal zone lymphoma |
| CASE Diagnosis (from medical center path report): | Lymphoma, extranodal marginal zone B-cell |
| Age: | 54 |
| Gender: | Female |

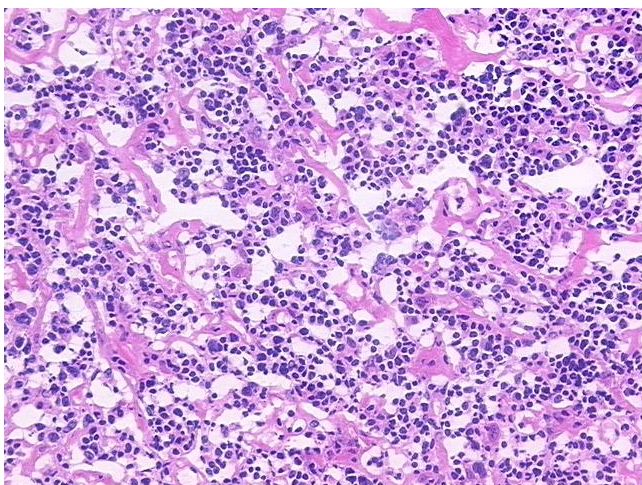


[View online »](#)

| | |
|------------------------------|---|
| Tumor Grade: | Not Reported |
| Minimum Stage Grouping: | IE |
| T (Extent of Primary Tumor): | Not applicable |
| N (Lymph node metastasis): | Not applicable |
| M (Distant metastasis): | Not applicable |
| Diagnostic Test Results: | CD3 ~ Leu4 ~ UCHT1 ! by IHC,Negative; CD11c ~ Integrin alpha X ~ LeuM5 ! by IHC,Negative; CD19 ~ B4 ~ Leu12 ! by IHC,Positive; CD22 ~ Leu14 ! by IHC,Positive; CD33 ~ My9 ! by IHC,Negative; Kappa light chain ! by IHC,Positive; CD8 ~ Leu2a |
| Storage: | Store frozen tissue sections at -80°C. |
| Stability: | All frozen tissue sections are stable for 1 year from date of purchase if stored at -80°C without repeated freeze/thaws. |

Product images:

4x Image



20x Image