

Product datasheet for **CS622031**

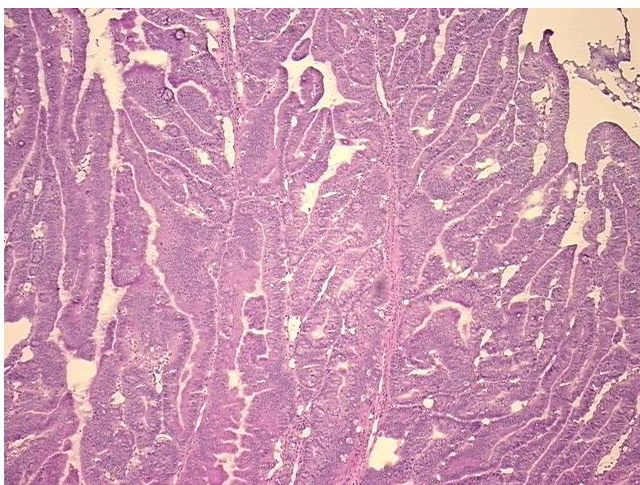
Frozen Tissue Sections, Colon: right

Product data:

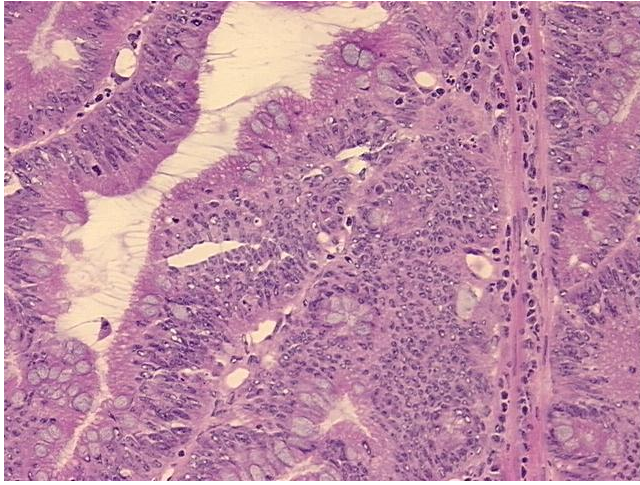
Product Type:	Frozen Sections
Disease State:	Other Disease
Diagnosis Category:	Benign Tumors
Tissue:	Colon
Frozen Sample ID:	FR65EDF8DA
Case ID:	CU0000005708
Tissue of Origin:	Colon: right
Site of Finding:	Colon: right
Appearance:	T
Sample Diagnosis (from Pathology Verification):	Adenoma of colon, tubulovillous
Normal:	0%
Lesional:	0%
Tumor:	90%
Tumor Hypo/Acellular Stroma:	5%
Tumor Hypercellular Stroma:	5%
Necrosis:	0%
CASE Diagnosis (from medical center path report):	Adenocarcinoma of colon



Age:	63
Gender:	Female
Tumor Grade:	AJCC G4: Undifferentiated
Minimum Stage Grouping:	IIA
T (Extent of Primary Tumor):	T3
N (Lymph node metastasis):	N0
M (Distant metastasis):	MX
Storage:	Store frozen tissue sections at -80°C.
Stability:	All frozen tissue sections are stable for 1 year from date of purchase if stored at -80°C without repeated freeze/thaws.

Product images:

4x Image



20x Image