

Product datasheet for CS621623

Frozen Tissue Sections, Brain

Product data:

Product Type:	Frozen Sections
Disease State:	Other Disease
Diagnosis Category:	Meningioma
Tissue:	Brain
Frozen Sample ID:	FR0001AADF
Case ID:	CU0000005691
Tissue of Origin:	Brain
Site of Finding:	Brain
Appearance:	Tumor
Sample Diagnosis (from Pathology Verification):	Meningioma, recurrent
Normal:	0%
Lesional:	0%
Tumor:	55%
Tumor Hypo/Acellular Stroma:	45%
Tumor Hypercellular Stroma:	0%
Necrosis:	0%
Pathology Verification notes from H&E review:	45% cauterized fibrous tissue
CASE Diagnosis (from medical center path report):	Meningioma, recurrent
Age:	75
Gender:	Male
Tumor Grade:	Not Reported



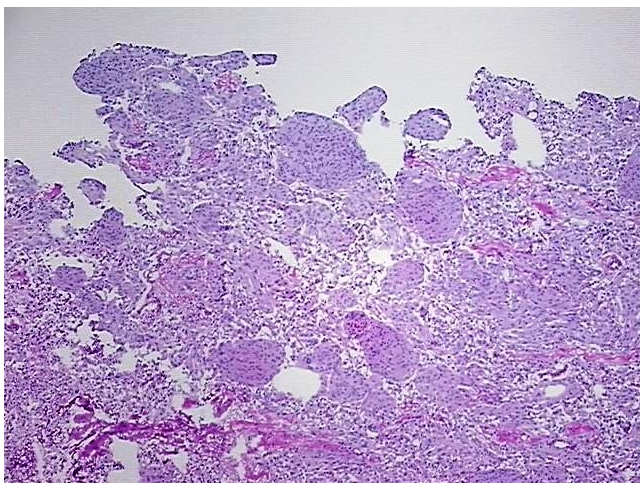
[View online »](#)

Minimum Stage Grouping: Not Reported

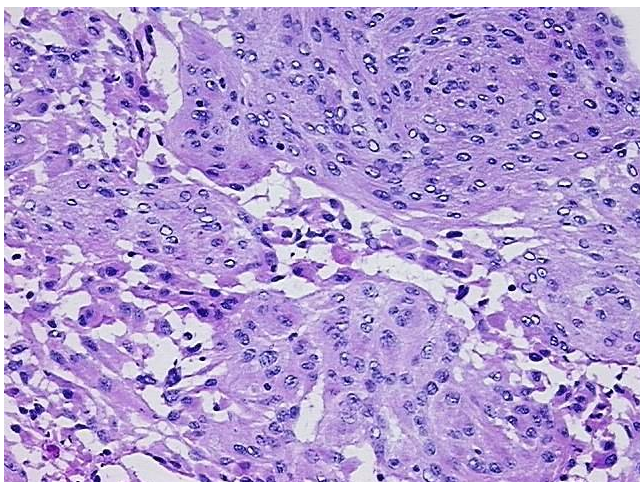
Storage: Store frozen tissue sections at -80°C.

Stability: All frozen tissue sections are stable for 1 year from date of purchase if stored at -80°C without repeated freeze/thaws.

Product images:



4x Image



20x Image