

## Product datasheet for **CS621400**

### Frozen Tissue Sections, Colon

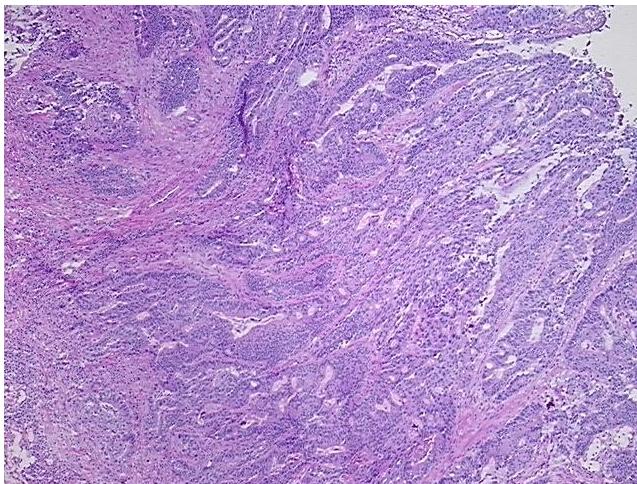
#### Product data:

Product Type:	Frozen Sections
Disease State:	Cancer
Diagnosis Category:	Colorectal Cancer
Tissue:	Colon
Frozen Sample ID:	FR0001A860
Case ID:	CU00000005676
Tissue of Origin:	Colon
Site of Finding:	Colon
Appearance:	T
Sample Diagnosis (from Pathology Verification):	Adenocarcinoma of colon
Normal:	40%
Lesional:	0%
Tumor:	40%
Tumor Hypo/Acellular Stroma:	0%
Tumor Hypercellular Stroma:	15%
Necrosis:	5%
Pathology Verification notes from H&E review:	5% lymphoplasmacytic infiltrate in cellular stroma
CASE Diagnosis (from medical center path report):	Adenocarcinoma of colon
Age:	82
Gender:	Female
Tumor Grade:	AJCC G1: Well differentiated

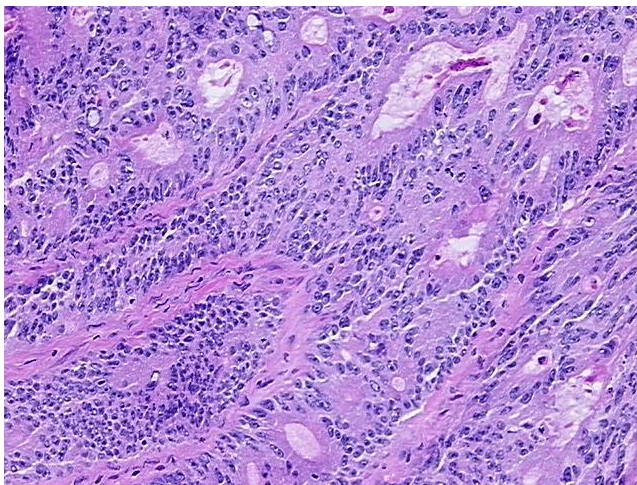

[View online »](#)

Minimum Stage Grouping:	I
T (Extent of Primary Tumor):	T2
N (Lymph node metastasis):	N0
M (Distant metastasis):	MX
Storage:	Store frozen tissue sections at -80°C.
Stability:	All frozen tissue sections are stable for 1 year from date of purchase if stored at -80°C without repeated freeze/thaws.

## Product images:



4x Image



20x Image