

## Product datasheet for **CS621356**

### Frozen Tissue Sections, Peripheral nerve

#### Product data:

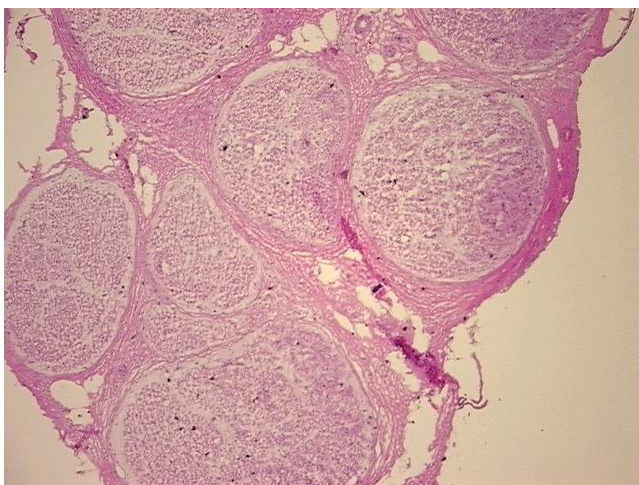
Product Type:	Frozen Sections
Disease State:	Normal
Diagnosis Category:	Normal
Tissue:	Nerve
Frozen Sample ID:	FR65EDF6E4
Case ID:	CU0000005670
Tissue of Origin:	Peripheral nerve
Site of Finding:	Peripheral nerve
Appearance:	R
Sample Diagnosis (from Pathology Verification):	Within normal limits
Normal:	100%
Lesional:	0%
Tumor:	0%
Tumor Hypo/Acellular Stroma:	0%
Tumor Hypercellular Stroma:	0%
Necrosis:	0%
Pathology Verification notes from H&E review:	Non Tumor Structures: 90% Nerves, 10% fibrous tissue
CASE Diagnosis (from medical center path report):	Atherosclerosis
Age:	87
Gender:	Female
Storage:	Store frozen tissue sections at -80°C.



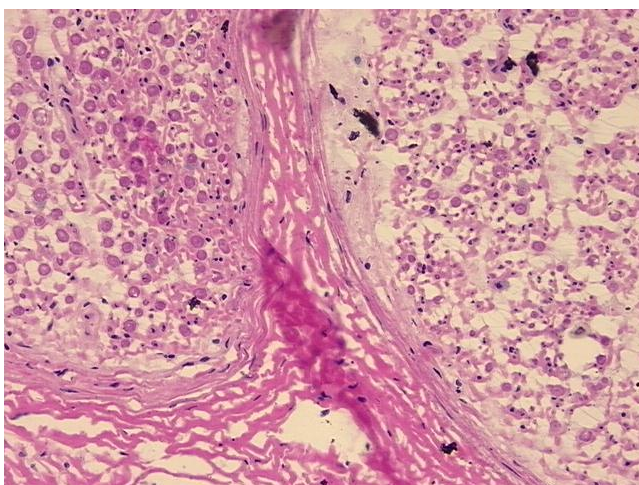
[View online »](#)

**Stability:** All frozen tissue sections are stable for 1 year from date of purchase if stored at -80°C without repeated freeze/thaws.

**Product images:**



4x Image



20x Image