

Product datasheet for **CS620604**

Frozen Tissue Sections, Pancreas

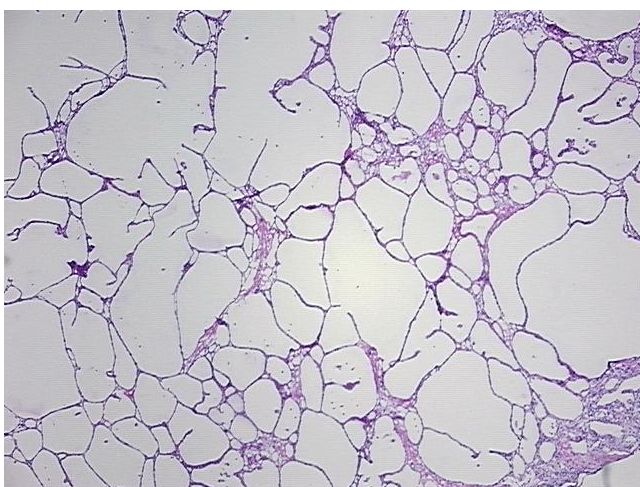
Product data:

Product Type:	Frozen Sections
Disease State:	Other Disease
Diagnosis Category:	Benign Tumors
Tissue:	Pancreas
Frozen Sample ID:	FR0001BA33
Case ID:	CU0000005592
Tissue of Origin:	Pancreas
Site of Finding:	Pancreas
Appearance:	T
Sample Diagnosis (from Pathology Verification):	Adenoma of pancreas, microcystic
Normal:	0%
Lesional:	0%
Tumor:	95%
Tumor Hypo/Acellular Stroma:	0%
Tumor Hypercellular Stroma:	5%
Necrosis:	0%
Pathology Verification notes from H&E review:	tumor is serous type of microcystic adenoma
CASE Diagnosis (from medical center path report):	Adenoma of pancreas, microcystic
Age:	72
Gender:	Female
Tumor Grade:	Not Reported

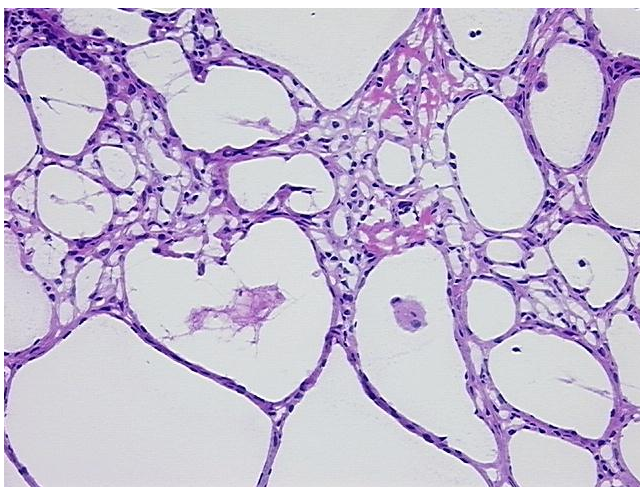


[View online »](#)

Minimum Stage Grouping:	Not Reported
T (Extent of Primary Tumor):	Not Reported
N (Lymph node metastasis):	Not Reported
M (Distant metastasis):	Not Reported
Storage:	Store frozen tissue sections at -80°C.
Stability:	All frozen tissue sections are stable for 1 year from date of purchase if stored at -80°C without repeated freeze/thaws.

Product images:

4x Image



20x Image