

Product datasheet for CS620312

Frozen Tissue Sections, Lymphoid tissue

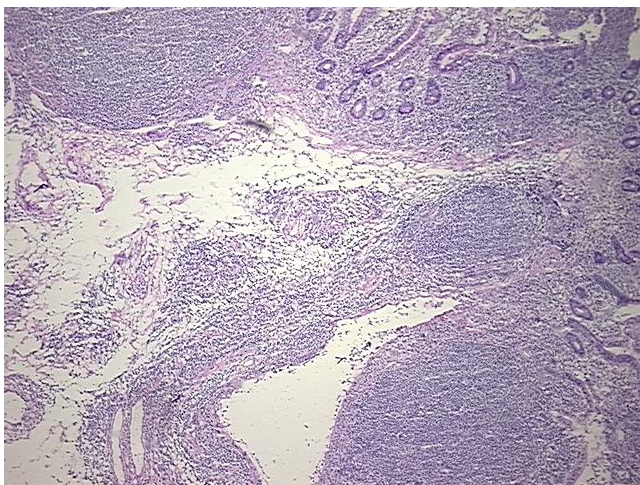
Product data:

Product Type:	Frozen Sections
Disease State:	Cancer
Diagnosis Category:	Lymphoma
Tissue:	Lymphoid tissue
Frozen Sample ID:	FR000199C5
Case ID:	CU0000005522
Tissue of Origin:	Lymphoid tissue
Site of Finding:	Small intestine
Appearance:	T
Sample Diagnosis (from Pathology Verification):	Lymphoma, follicular
Normal:	5%
Lesional:	0%
Tumor:	85%
Tumor Hypo/Acellular Stroma:	0%
Tumor Hypercellular Stroma:	10%
Necrosis:	0%
Pathology Verification notes from H&E review:	Tumor: grade I-II
CASE Diagnosis (from medical center path report):	Lymphoma, follicular
Age:	58
Gender:	Female
Tumor Grade:	WHO Grade II

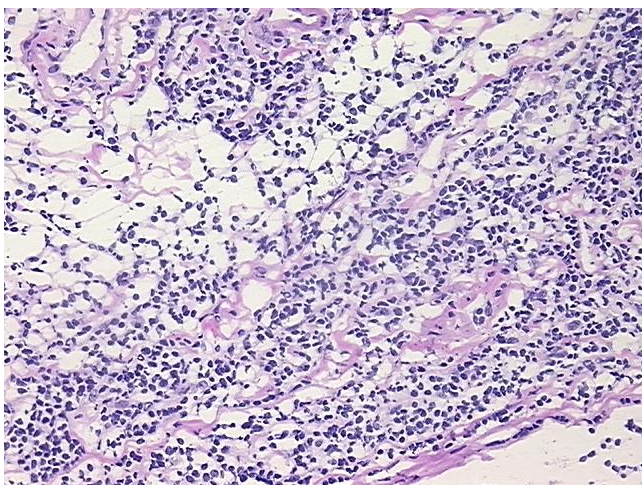


[View online »](#)

Minimum Stage Grouping:	IV
T (Extent of Primary Tumor):	Not applicable
N (Lymph node metastasis):	Not applicable
M (Distant metastasis):	Not applicable
Diagnostic Test Results:	Ki67 ~ MIB1 ! by IHC,Positive; BCL2 oncoprotein ! by IHC,Positive; CD10 ~ CALLA ~ Common ALL antigen ! by IHC,Positive
Storage:	Store frozen tissue sections at -80°C.
Stability:	All frozen tissue sections are stable for 1 year from date of purchase if stored at -80°C without repeated freeze/thaws.

Product images:

4x Image



20x Image